



Nothing but **HEAVY DUTY.**®

**FALL 2013 CORDLESS CATALOG**

**M12**  
SYSTEM

**M18**  
SYSTEM

**M28**  
SYSTEM



## THE WORLD LEADER IN CORDLESS INNOVATION

**M12**  
SYSTEM

**M18**  
SYSTEM

**M28**  
SYSTEM



**OVER 100 JOBSITE SOLUTIONS**

### BY THE TRADE FOR THE TRADE

When it comes to power tools, there isn't an expert out there who knows what works better than you. Milwaukee® has a proven track record of getting out in the field to understand the demands of a constantly changing workplace. By working with our users, we're designing tools that make you more productive and help you be the best at what you do.

### GAME-CHANGING SOLUTIONS

At Milwaukee®, the phrase "good enough" doesn't exist in our vocabulary. Our goal is to solve problems in ways that have never been done before. The result: tools that offer unmatched levels of performance, productivity, and life.



### BUILT ON THE BEST FOUNDATION



#### REDLITHIUM™ BATTERIES

It lasts longer, thinks faster, and works harder than all other professional LITHIUM-ION batteries. Built to withstand even the harshest environments, REDLITHIUM™ batteries deliver more work over the life of the battery, no matter what the job.



#### MILWAUKEE® HIGH PERFORMANCE MOTORS

Highly advanced motor technology boosts efficiency, generating more power from a compact power plant. That means the ultimate performance, durability and run-time comes in a smaller, lighter package.



#### REDLINK™ INTELLIGENCE

An advanced combination of hardware and software, REDLINK™ Intelligence enables full-circle communication between our batteries and tools, allowing for unmatched levels of performance, protection, and productivity.

## USER-DRIVEN INNOVATIONS

Our mission in cordless design is to introduce new solutions that make tradesmen on the jobsite more productive. Working side by side with users during the design and testing process gives us the ability to deliver game-changing solutions. Whether it be through products that are first to bring power to a manual activity, or advances in fundamental tools like drills and saws, our drive to improve workplace productivity will continue to help us push the envelope of innovation and design.



### M12™ ProPEX® Expansion Tool INDUSTRY'S FASTEST PROPEX® INSTALLS

Say goodbye to the awkward, time-consuming maneuvers required to manually expand tubing. The M12™ ProPEX® Expander features an auto-rotating head and continuous expansion for quick, one-handed operation in the tightest spaces.

### M12™ Copper Tubing Cutter CUTS COPPER UP TO 10X FASTER

Highly efficient gearing allows the M12™ Copper Tubing Cutter to speed through cuts with ease. So advanced, the tool will only start a cut if it can finish it. Its unique design allows tradesmen to work faster and cut copper in tight spaces.



### M12™ Heated Gear ALL DAY HEAT IN THE HARSHTEST ENVIRONMENTS

Combining our REDLITHIUM™ battery technology with state-of-the-art carbon fiber heating elements, the M12™ Heated Jacket conquers the cold both on and off the jobsite.



### M12™ 600 MCM Cable Cutter HYDRAULIC FORCE, HAND TOOL PORTABILITY

The M12™ 600 MCM Cable Cutter allows tradesmen to go from a tough, manual task to a simplified, powered solution. It effortlessly slices through otherwise challenging large cables. Easily fitting in crowded panels, the M12™ Cable Cutter leaves a clean, installation-ready cut.



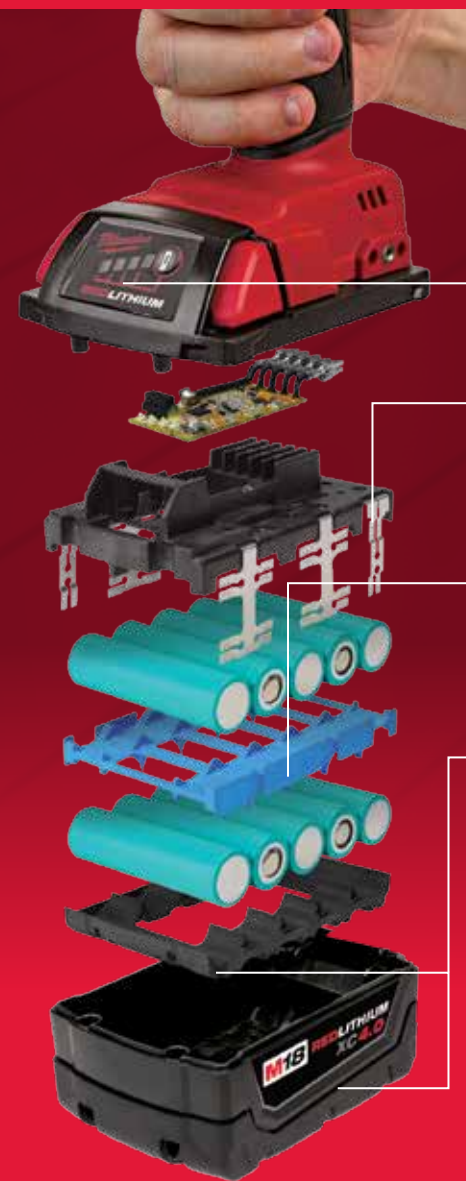
### M18™ HACKZALL® One-Handed Recip Saw HACKSAW CONTROL, RECIP SAW VERSATILITY

Think of it as the SAWZALL® specially balanced for one-handed use. The M18™ HACKZALL® makes clean, more accurate cuts, reducing arm fatigue while working overhead and in tight spaces thanks to lighter weight and minimal vibration.

## BATTERY TECHNOLOGY

Since introducing the world's first LITHIUM-ION cordless system in 2005, Milwaukee® has continued to lead the industry in LITHIUM-ION technology and patents. Milwaukee®'s focus on LITHIUM-ION continually drives us ahead of the competition to deliver the best battery systems in the industry. Our exclusive integration of chemistry, cell design and circuitry combines for superior output in the harshest environments.

**LONGER BATTERY LIFE** | **MORE POWER** | **MORE RUN-TIME**



**Battery Fuel Gauge**

**Integrated Weld Frame**

Provides a strong, compact structure to securely hold cells for maximum life

**Cell Separator**

Prevents cell damage from vibration or drops

**Impact and Vibration Protective Rubber**

Protects cells and pack during drops and provides maximum life

### REDLITHIUM™ 2.0/XC4.0 BATTERIES

- Up to 2X More Run-Time
- Up to 20% More Power
- Over 2X More Recharges

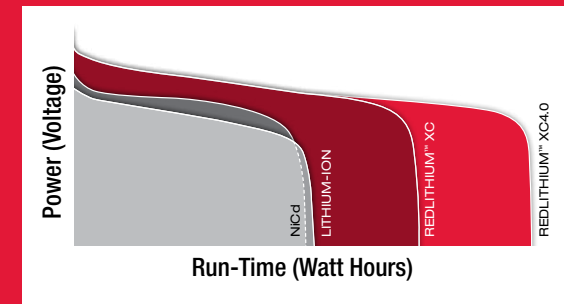
## LIFETIME ADVANTAGE



Based on 35A CC discharge over the life of the battery pack

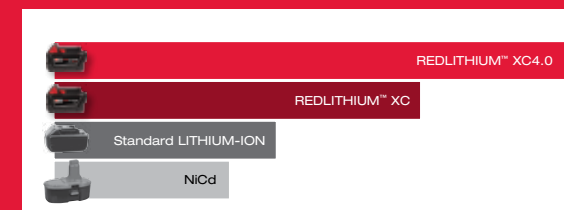
REDLITHIUM™ Battery Packs offer more life than any other professional LITHIUM-ION or NiCd system. That means your tools will complete more work per charge and more work over the life of the battery.

## POWER ADVANTAGE



20A CC Overlay

## RUN-TIME ADVANTAGE



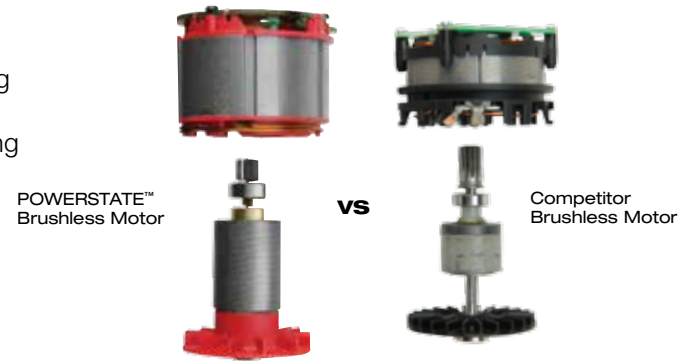
Cuts in 1/2" OSB 4' x 6' Sheet



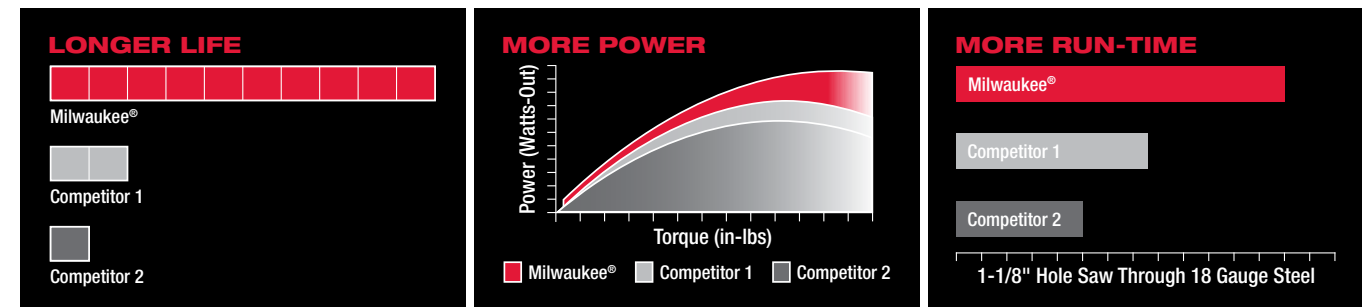
**UPGRADE. OUTWORK. OUTLAST.**

## BRUSHLESS ADVANTAGE

The Milwaukee® POWERSTATE™ brushless motor converts energy into power and torque more efficiently, resulting in superior application performance. The POWERSTATE™ brushless motor has nearly 4X the amount of power-generating components than the competitor's brushless motor. It also features higher-grade, rare-earth magnets and greater copper content.



**LONGER** MOTOR LIFE | **MORE** POWER | **MORE** RUN-TIME

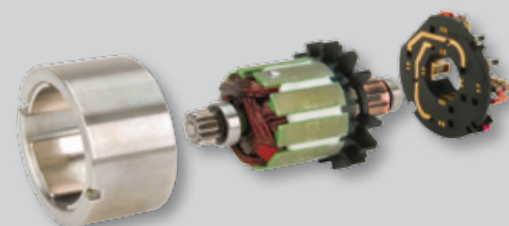


## TOOL-SPECIFIC MOTOR DESIGN



## MILWAUKEE® DESIGNED 4-POLE MOTOR

When it comes to brushed motors, nothing comes close to the Milwaukee® designed 4-Pole Motor. A robust design combined with rare-earth magnets delivers high power and increased run-time in a compact design vs. standard brushed motors.



## ELECTRONICS

With over 100 unique solutions in our portfolio, it's safe to say we offer tools to handle a wide variety of applications. REDLINK™ Intelligence is an advanced combination of hardware and software that delivers the precise amount of power and performance necessary for the application, leaving your investment better protected and more productive.

**UNMATCHED PROTECTION** | **OPTIMIZED PERFORMANCE** | **MORE PRODUCTIVITY**

## OVERLOAD PROTECTION



Stalling or burning up tools is a failure of communication. Milwaukee®'s best-in-class, advanced overload protection delivers maximum performance and protection.

## OPTIMIZED PERFORMANCE

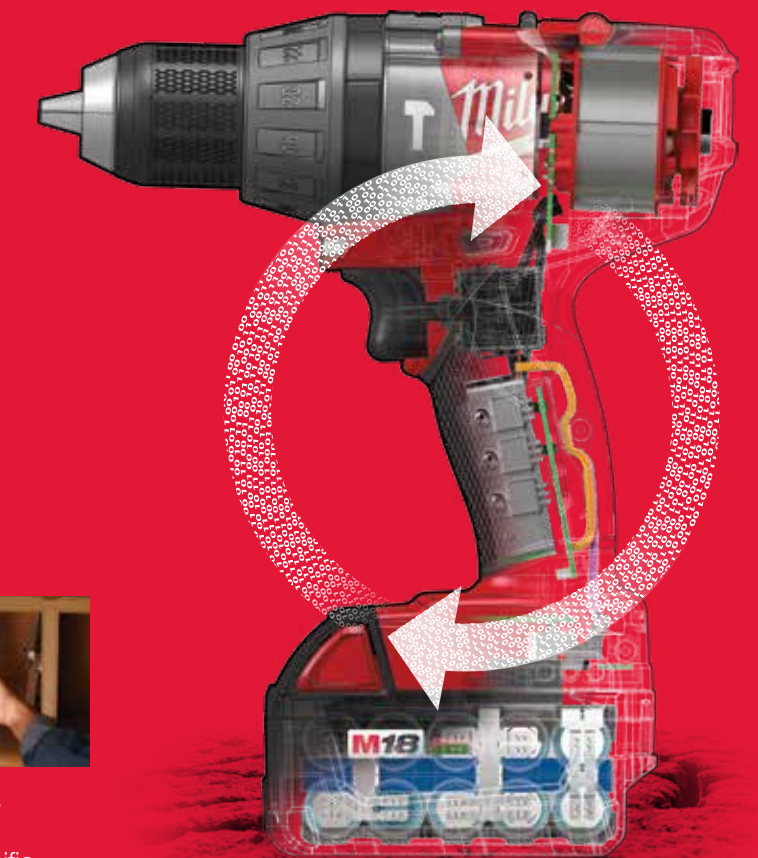


Every tool has its own unique performance profile. REDLINK™ Intelligence optimizes performance for each Milwaukee® tool, taking into account the specific hardware, its application and the loads placed on it.

## MORE PRODUCTIVITY



All Milwaukee® cordless tools feature a fuel gauge. This allows tradesmen to monitor remaining battery power prior to starting a job.



## REDLINK PLUS™ INTELLIGENCE

REDLINK PLUS™ delivers more advanced communication between the tool, battery, and charger, resulting in peak application performance and protection. The upgraded electronics allow new feature sets like DRIVE CONTROL™, which allows tradesmen to go from precision work to maximum performance with the push of a button.



Proprietary 3-Mode DRIVE CONTROL™



Nothing but **HEAVY DUTY.**



## **M12** PORTABLE PRODUCTIVITY

The Milwaukee® M12™ cordless system delivers industry-leading durability and power in a size that outperforms the competition in the tightest places. M12™ defines cordless tool innovation, transforming inefficient manual tools – such as cable and copper tubing cutters – into advanced workhorses powered by Milwaukee®'s REDLITHIUM™ battery technology. More than 60 unique solutions make the M12™ family the largest sub-compact cordless system on the market.

The flagship of this family: the M12 FUEL™ collection – extreme-performance cordless power tools designed, engineered and built to deliver unmatched productivity. Milwaukee® affirms its industry leadership, integrating three ground-breaking technologies in a single package: a best-in-class POWERSTATE™ Brushless Motor, REDLITHIUM™ battery technology, and exclusive REDLINK PLUS™ Intelligence. M12 FUEL™ puts unrivaled durability, run-time and performance into the hands of the professional tradesman.



# DRIVEN TO OUTPERFORM.™

M12 FUEL™ is engineered for the most demanding tradesmen in the world. M12 FUEL™ delivers unrivaled performance in a compact structure and features three Milwaukee®-exclusive innovations — the POWERSTATE™ Brushless Motor, REDLITHIUM™ Battery Pack, and REDLINK PLUS™ Intelligence Hardware and Software — that deliver unmatched power, run-time and durability.

Simply put, M12 FUEL™ is best-in-class, full-circle technology that drives, protects and powers your cordless tools beyond the rest.

## M12 FUEL™

**LONGER** MOTOR LIFE | **MORE** POWER | **MORE** RUN-TIME

### INCLUDED IN ALL M12 FUEL™ PRODUCTS



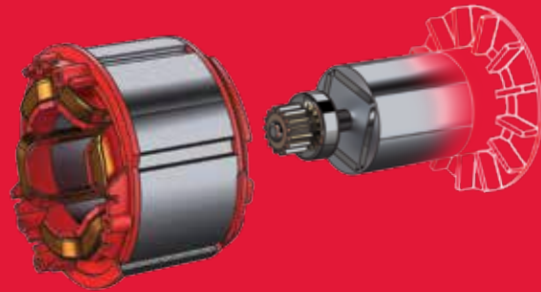
**REDLITHIUM™ 2.0/XC4.0**

**UPGRADE. OUTWORK. OUTLAST.**

UP TO **2X** MORE RUN-TIME | UP TO **20%** MORE POWER | OVER **2X** MORE RECHARGES

## 1 POWERSTATE™ BRUSHLESS MOTOR

- Milwaukee® Designed and Built Brushless Motor
- Outperforms All Leading Competitors
- Up to 10X Longer Motor Life



**5** YEAR WARRANTY

## 2 REDLINK PLUS™ INTELLIGENCE

- Most Advanced Electronic System on the Market for Maximum Performance
- Total System Communication with Overload Protection Increases Tool Life
- Built-in Fuel Gauge Displays Remaining Charge



## 3 REDLITHIUM™ 2.0 & XC4.0 BATTERY PACKS

- Up to 4X Run-Time
- Up to 20% More Power
- Over 2X More Recharges than Leading Competitors
- Operates Below -18° C / 0° F



**M12 FUEL**  
**1/4" Hex 2-Speed Screwdriver Kit**  
2402-22 (2402-20 Tool-Only)

**Specifications:**

Peak Torque	325 in-lbs
RPM	0 – 450 / 0 – 1,700
Chuck Type	1/4" Hex Quick Change
Length	6-5/8"
Weight	2.3 lbs

**Includes:** (2) M12™ REDLITHIUM™ 2.0 Battery Packs, Belt Clip, Charger, Carrying Case



**M12™ 1/4" Hex Screwdriver Kit**  
2406-22 (2401-20 Tool-Only)

**Specifications:**

Peak Torque	275 in-lbs
RPM	0 – 400 / 0 – 1,500
Chuck Type	1/4" Hex Quick Change
Length	6-3/4"
Weight	2.4 lbs

**Includes:** (2) M12™ REDLITHIUM™ Compact Battery Packs, Charger, Soft Carrying Case



**M12™ 1/4" Hex Screwdriver Kit**  
2401-22 (2401-20 Tool-Only)

**Specifications:**

Peak Torque	175 in-lbs
RPM	0 – 500
Chuck Type	1/4" Hex Quick Change
Length	7"
Weight	2.0 lbs

**Includes:** (2) M12™ REDLITHIUM™ Compact Battery Packs, Charger, Soft Carrying Case



**M12™ 3/8" Drill/Driver Kit**  
2407-22 (2407-20 Tool-Only)

**Specifications:**

Peak Torque	275 in-lbs
RPM	0 – 400 / 0 – 1,500
Chuck Type	3/8" Metal Single Sleeve
Length	7-3/8"
Weight	2.6 lbs

**Includes:** (2) M12™ REDLITHIUM™ Compact Battery Packs, Charger, Carrying Case



**M12 FUEL**  
**1/2" Hammer Drill/Driver Kit**  
2404-22 (2404-20 Tool-Only)

**Specifications:**

Peak Torque	350 in-lbs
RPM	0 – 450 / 0 – 1,700
BPM	0 – 25,500
Chuck Type	1/2" Metal Single Sleeve
Length	7-5/8"
Weight	3.0 lbs

**Includes:** (1) M12™ REDLITHIUM™ XC4.0 Battery Pack, (1) M12™ REDLITHIUM™ 2.0 Battery Pack, Belt Clip, Charger, Carrying Case



**M12™ 3/8" Hammer Drill/Driver Kit**  
2408-22 (2408-20 Tool-Only)

**Specifications:**

Peak Torque	275 in-lbs
RPM	0 – 400 / 0 – 1,500
BPM	0 – 22,500
Chuck Type	3/8" Metal Single Sleeve
Length	7-1/2"
Weight	2.7 lbs

**Includes:** (2) M12™ REDLITHIUM™ Compact Battery Packs, Charger, Carrying Case

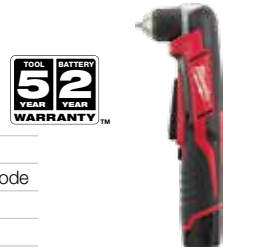


**M12™ 3/8" Right Angle Drill/Driver Kit**  
2415-21 (2415-20 Tool-Only)

**Specifications:**

Peak Torque	100 in-lbs
RPM	0 – 800
Clutch Settings	11 Settings plus Drill Mode
Chuck Type	3/8" Single Sleeve
Head Profile	3-3/4"
Weight	2.4 lbs

**Includes:** (1) M12™ REDLITHIUM™ Compact Battery Pack, Charger, Soft Carrying Case



**M12 FUEL**  
**1/4" Hex Impact Driver Kit**  
2453-22 (2453-20 Tool-Only)

**Specifications:**

Fastening Torque (2 Modes)	175 / 1,200 in-lbs
IPM	0 – 3,550
RPM (2 Modes)	0 – 1,200 / 0 – 2,650
Chuck Type	1/4" Hex Quick Change
Length	6"
Weight	2.3 lbs

**Includes:** (2) M12™ REDLITHIUM™ 2.0 Battery Packs, Belt Clip, Charger, Carrying Case



**M12™ 1/4" Hex Impact Driver Kit**  
2462-22 (2462-20 Tool-Only)

**Specifications:**

Fastening Torque	1,000 in-lbs
IPM	0 – 3,300
RPM	0 – 2,500
Chuck Type	1/4"
Length	6-1/2"
Weight	2.3 lbs

**Includes:** (2) M12™ REDLITHIUM™ Compact Battery Packs, Charger, Carrying Case



**M12 FUEL**  
**1/4" Impact Wrench Kit**  
2452-22 (2452-20 Tool-Only)

**Specifications:**

Fastening Torque (2 Modes)	10 / 42 ft-lbs
IPM	0 – 4,000
RPM (2 Modes)	0 – 1,200 / 0 – 2,650
Anvil	1/4" Friction Ring
Length	5-3/4"
Weight	2.1 lbs

**Includes:** (2) M12™ REDLITHIUM™ 2.0 Battery Packs, Belt Clip, Charger, Carrying Case



**M12™ 1/4" Impact Wrench Kit**  
2461-22 (2461-20 Tool-Only)

**Specifications:**

Fastening Torque	38 ft-lbs
IPM	0 – 3,800
RPM	0 – 2,500
Anvil	1/4" Friction Ring
Length	6"
Weight	2.1 lbs

**Includes:** (2) M12™ REDLITHIUM™ Compact Battery Packs, Charger, Carrying Case



**M12 FUEL**  
**3/8" Impact Wrench Kit**  
2454-22 (2454-20 Tool-Only)

**Specifications:**

Fastening Torque (2 Modes)	17 / 117 ft-lbs
IPM	0 – 3,500
RPM (2 Modes)	0 – 1,200 / 0 – 2,650
Anvil	3/8" Friction Ring
Length	6-1/4"
Weight	2.4 lbs

**Includes:** (2) M12™ REDLITHIUM™ 2.0 Battery Packs, Belt Clip, Charger, Carrying Case



**M12™ 3/8" Impact Wrench Kit**  
2463-22 (2463-20 Tool-Only)

**Specifications:**

Fastening Torque (2 Modes)	1,200 in-lbs / 100 ft-lbs
IPM	0 – 3,300
RPM	0 – 2,500
Chuck Type	3/8" Friction Ring
Length	6-1/2"
Weight	2.3 lbs

**Includes:** (2) M12™ REDLITHIUM™ Compact Battery Packs, Charger, Carrying Case



**M12™ 1/4" Ratchet Kit**  
2456-21 (2456-20 Tool-Only)

**Specifications:**

Fastening Torque	30 ft-lbs
RPM	0 – 250
Anvil	1/4" Ball Detent
Head Profile	3/4"
Length	10-3/4"
Weight	1.9 lbs

**Includes:** (1) M12™ REDLITHIUM™ Compact Battery Pack, Charger, Soft Carrying Case



**M12™ 3/8" Ratchet Kit**  
2457-21 (2457-20 Tool-Only)

**Specifications:**

Fastening Torque	35 ft-lbs
RPM	0 – 250
Anvil	3/8" Ball Detent
Head Profile	3/4"
Length	10-3/4"
Weight	1.9 lbs

**Includes:** (1) M12™ REDLITHIUM™ Compact Battery Pack, (1) 3/8" to 1/4" Adapter, Charger, Soft Carrying Case



**M12 FUEL**  
**5/8" SDS Plus Rotary Hammer Kit**

2416-22XC (2416-20 Tool-Only)

**Specifications:**

RPM	0 – 900
BMP	0 – 6,200
Chuck Type	SDS Plus
2 Mode Operation	Rotary Hammer and Rotation Only
Length	10"
Weight	3.9 lbs



**Includes:** (2) M12™ REDLITHIUM™ XC4.0 Extended Capacity Battery Packs, Charger, Carrying Case

Compatible with 2306-22 M12™ HAMMERVAC™ Universal Dust Extractor



**1/2" SDS Plus Rotary Hammer Kit**

2412-22XC (2412-20 Tool-Only)

**Specifications:**

RPM	0 – 800
BPM	0 – 5,350
Chuck Type	SDS Plus
2 Mode Operation	Rotary Hammer and Rotation Only
Length	9"
Weight	3.9 lbs



**Includes:** (2) M12™ REDLITHIUM™ XC Extended Capacity Battery Packs, Charger, Carrying Case

Compatible with 2306-22 M12™ HAMMERVAC™ Universal Dust Extractor

**M12™ Palm Nailer Kit**

2458-21 (2458-20 Tool-Only)

**Specifications:**

Impact Energy	2.2 ft-lbs (3.0J)
BPM	0 – 2,700
Collet Capacity	6D – 16D
Head	3/4" Low Profile
Magnetic Tip	Yes
Weight	3.4 lbs



**Includes:** (1) M12™ REDLITHIUM™ Compact Battery Pack, Hand Strap, Charger, Soft Carrying Case



**M12™ HAMMERVAC™ Universal Dust Extractor**

2306-22 (2306-20 Tool-Only)



**INDUSTRY'S ONLY UNIVERSAL DUST EXTRACTOR**



**Specifications:**

Universal Handle System	Compatible with Major Brands of SDS Plus Rotary Hammers and AC & DC Hammer Drills
Replaceable Certified HEPA Filter	Filters 99.97% of Debris 0.3 Microns and Above
Self-Powered by M12™ REDLITHIUM™ Battery Pack	No Cords or Hoses for Maximum Portability
3-Mode Switch	Yes (Auto-on and Auto-off w/Delay)
Max Bit Size	5/8"
Weight	3.3 lbs

**Includes:** (2) M12™ REDLITHIUM™ Compact Battery Packs, (3) Side Handle Collars, Side Handle Grip, Nozzle, Charger, Carrying Case



**M12™ Rotary Tool Kit**

2460-21 (2460-20 Tool-Only)

**Specifications:**

Speed Settings	6
RPM	5,000 – 32,000
Collet	1/8", Universal
Length	9-1/2"
Weight	1.3 lbs



**Includes:** (1) M12™ REDLITHIUM™ Compact Battery Pack, (5) Cutting Wheels, (1) Mandrel, (1) Wrench, Charger, Soft Carrying Case

**Related Accessory:** 49-94-1500 – 5 Pc Reinforced Cut-Off Wheels



**M12™ HACKZALL® Recip Saw Kit**

2420-22, 2420-21 (2420-20 Tool-Only)

**Specifications:**

SPM	0 – 3,000
Stroke Length	1/2"
Blade Clamp	QUIK-LOK® (Accepts all SAWZALL® Blades)
Length	11"
Weight	2.6 lbs



**Includes:** 2420-22 (2) M12™ REDLITHIUM™ Compact Battery Packs, (2) HACKZALL® Blades, Charger, Contractor Bag; 2420-21 Includes (1) M12™ REDLITHIUM™ Compact Battery Pack



**M12™ 600 MCM Cable Cutter Kit**

2472-21XC (2472-20 Tool-Only)

**Specifications:**

Cut Capacity	600 MCM Copper, 750 MCM Aluminum, 1-3/16" Communication Cable
Jaw Opening	1-7/16"
Two-Speed	Yes
Length	10-1/2"
Weight	6.9 lbs



**Includes:** (1) M12™ REDLITHIUM™ XC Extended Capacity Battery Pack, Multi-Voltage Charger, Carrying Case

**Related Accessory:** 48-44-0410 – M12™ 600 MCM Cable Cutter Blade



**M12™ Multi-Tool Kit**

2426-22, 2426-21 (2426-20 Tool-Only)

**Specifications:**

Speed Settings	12
OPM	5,000 – 20,000
Universal Accessory Adapter	Yes
Length	10-7/8"
Weight	2.1 lbs



**Includes:** 2426-22 (2) M12™ REDLITHIUM™ Compact Battery Packs, (1) Accessory Adapter, (1) Wood Cutting Blade, (1) Sanding Pad, (5) Assorted Sanding Sheets, Charger, Contractor Bag; 2426-21 Includes (1) M12™ REDLITHIUM™ Compact Battery Pack

**M12™ High Performance Jig Saw Kit**

2445-21 (2445-20 Tool-Only)

**Specifications:**

SPM	0 – 2,800
Stroke Length	3/4"
Bevel Capacity	45° (Positive Locks at 90° and 45°)
Blade Clamp	QUIK-LOK® T-Shank
Length	8-3/4"
Weight	4.2 lbs



**Includes:** (1) M12™ REDLITHIUM™ Compact Battery Pack, (1) Milwaukee® 10 TPI Wood Cutting T-Shank Jig Saw Blade, (1) Anti-Splintering Insert, (1) Non-Marring Shoe, Charger, Contractor Bag



**M12™ Sub-Compact Band Saw Kit**

2429-21XC (2429-20 Tool-Only)

**Specifications:**

SFPM	280
Blade Size	27"
Cut Capacity	1-5/8" x 1-5/8"
Length	12"
Weight	6.7 lbs



**Meets OSHA Guarding Requirements. Suitable for One-Handed Use.**



**Includes:** (1) M12™ REDLITHIUM™ XC Extended Capacity Battery Pack, (1) 18 TPI Sub-Compact Portable Band Saw Blade, Charger, Carrying Case

**Related Accessory:** 48-39-0572 – 18 TPI Sub-Compact Portable Band Saw Blades (3 Pack)





**M12™ Copper Tubing Cutter Kit**

2471-22, 2471-21 (2471-20 Tool-Only)

**Specifications:**

Cut Capacity	3/8" – 1" (1/2" – 1-1/8" O.D.)
Tubing Type	M, L, and K Copper
RPM	500
Length	14"
Weight	3.2 lbs



**Includes:** 2471-22 (2) M12™ REDLITHIUM™ Compact Battery Packs, Charger, Carrying Case; 2471-21 Includes (1) M12™ REDLITHIUM™ Compact Battery Pack

**Related Accessory:**

48-38-0010 – Copper Cutter Wheel (2 Pack)



**M12™ FORCE LOGIC™ Press Tool Kit**

2473-22 (2473-20 No Jaw Kit)

**Specifications:**

Capacity	1/2" – 1-1/4" CU
Calibration Interval	32,000 Cycles (LED Indicator)
Approximate Cycle Time	5 Seconds
Press Force	5,400 lbs
Length	12-3/4"
Weight	3.8 lbs

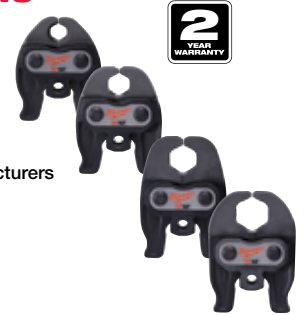


**Includes:** 2473-22 (2) M12™ REDLITHIUM™ Compact Battery Packs, (3) Jaws 1/2" – 1", Charger, Carrying Case; 2473-20 Includes No Jaws

**M12™ FORCE LOGIC™ Jaws**

**Sizes:**

49-16-2450	M12™ 1/2" Compact Jaw
49-16-2451	M12™ 3/4" Compact Jaw
49-16-2452	M12™ 1" Compact Jaw
49-16-2453	M12™ 1-1/4" Compact Jaw



Designed for use with all major fitting manufacturers  
Jaws compatible with 2473-20 M12™ Press Tool



**M12™ ProPEX® Expansion Tool Kit**

2432-22 (2432-20 Tool-Only)

**Specifications:**

Capacity	3/8" – 1"
Stroke Length	14mm
Speed	60 SPM
Head Compatibility	3/8" – 1" M12™ / Uponor
Head Rotation	Built-in Auto Rotator



**Includes:** (2) M12™ REDLITHIUM™ Compact Battery Packs, (1) 1/2" Expansion Head, (1) 3/4" Expansion Head, (1) 1" Expansion Head, Grease, Charger, Carrying Case

**M12™ No-Hub Driver Kit**

2455-22 (2455-20 Tool-Only)

**Specifications:**

Torque Settings	60 in-lbs / 80 in-lbs / Drill Mode
RPM	0 – 750
Chuck Type	1/4" Hex
Calibration Interval	25,000 Cycles (LED Indicator)
Weight	2.7 lbs



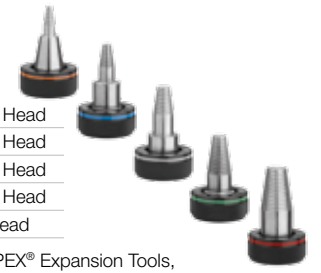
**Includes:** (2) M12™ REDLITHIUM™ Compact Battery Packs, (3) SHOCKWAVE™ Nut Drivers (1/4", 5/16", 3/8"), Charger, Carrying Case



**M12™ ProPEX® Accessory Heads**

**Sizes:**

49-16-2403	M12™ 3/8" Expansion Head
49-16-2404	M12™ 1/2" Expansion Head
49-16-2405	M12™ 5/8" Expansion Head
49-16-2406	M12™ 3/4" Expansion Head
49-16-2408	M12™ 1" Expansion Head



Compatible with both M12™ and M18™ ProPEX® Expansion Tools, and most Uponor Tools  
ProPEX® is a registered trademark of Uponor, Inc.

**M12™ 10 oz Caulk and Adhesive Gun Kit**

2441-21 (2441-20 Tool-Only)

**Specifications:**

Force	400 lbs
Inches Per Minute	0 – 29
Speed Settings	6
Auto-Reverse Anti-Drip	Yes
Weight	4.1 lbs



**Includes:** (1) M12™ REDLITHIUM™ Compact Battery Pack, (1) 10 oz Carriage, (1) M12™ Plunger Rod and Piston Assembly, Charger



**M12™ 20 oz Aluminum Barrel Sausage Style Caulk and Adhesive Gun Kit**

2442-21

**Specifications:**

Force	400 lbs
Inches Per Minute	0 – 29
Speed Settings	6
Auto-Reverse Anti-Drip	Yes
Weight	4.9 lbs



**Includes:** (1) M12™ REDLITHIUM™ Compact Battery Pack, (1) 20 oz Aluminum Sausage Style Barrel, (1) M12™ 20 oz Plunger Rod and Piston Assembly, Nozzle, Charger

**M12™ Caulk Gun Accessories**

- 48-08-0900 M12™ 10 oz Caulk and Adhesive Gun Conversion Kit
- 48-08-0905 M12™ 20 oz Aluminum Barrel Sausage Style Caulk and Adhesive Gun Conversion Kit
- 48-08-0910 M12™ Quart Caulk and Adhesive Gun Conversion Kit
- 48-08-1091 20 oz Aluminum Barrel Kit
- 48-08-1096 20 oz Clear Barrel Kit
- 31-12-0700 Caulk Gun Nozzle – Black

**M12™ Grease Gun Kit**

2446-21XC (2446-20 Tool-Only)

**Specifications:**

Output Pressure	Over 8,000 PSI
Run-Time	Up to 7 Grease Cartridges Per Charge
Grease Capacity	14 oz Cartridge, 16 oz Bulk, 16 oz Suction
Air Bleeder Valve	Yes
Weight	7.2 lbs



**Includes:** (1) M12™ REDLITHIUM™ XC Extended Capacity Battery Pack, (1) 36" Flex Hose with Spring Guard, (1) Grease Coupler, Charger, Carrying Case



**M12™ M-SPECTOR 360™ Rotating Inspection Scope**

2313-21 (2313-20 Tool-Only)

**Specifications:**

Screen Size	2.7" High-Resolution LCD
Display Resolution	320 x 240
Camera Head Diameter	9mm (0.35")
Cable Length	3'
LED Brightness	4 LEDs, 5 Settings



**Includes:** (1) M12™ REDLITHIUM™ Compact Battery Pack, Hook, Magnet, Mirror Attachments, Charger, Carrying Case

**M12™ M-SPECTOR 360™ 9 ft Rotating Inspection Scope Kit**

2314-21

**Specifications:**

Screen Size	2.7" High-Resolution LCD
Display Resolution	320 x 240
Camera Head Diameter	9mm (0.35")
Cable Length	9'
LED Brightness	4 LEDs, 5 Settings



**Includes:** (1) M12™ REDLITHIUM™ Compact Battery Pack, Hook, Magnet, Mirror Attachments, Pipe Guide, Charger, Carrying Case



**M12™ M-SPECTOR™ AV Multimedia Camera Kit (17mm)** 2311-21

**Specifications:**

Screen Size	3.5" LCD
Display Resolution	320 x 240
Camera Head Diameter	17mm (0.7")
Cable Length	3'
Adjustable Image Zoom	4X
LED Brightness	4X



**Includes:** (1) M12™ REDLITHIUM™ Compact Battery Pack, 17mm Camera Cable, 2GB Memory Card, USB Cable, Charger, Carrying Case

**M12™ M-SPECTOR™ AV Multimedia Camera Kit (9mm)** 2312-21

**Specifications:**

Screen Size	3.5" LCD
Display Resolution	320 x 240
Camera Head Diameter	9mm (0.35")
Cable Length	3'
Adjustable Image Zoom	4X
LED Brightness	4X



**Includes:** (1) M12™ REDLITHIUM™ Compact Battery Pack, 9mm Camera Cable, 4GB Memory Card, USB Cable, Charger, Carrying Case



**M12™ M-SPECTOR 360™ Accessories**

**Items:**

48-53-0112	Accessory 3-Pack (Includes Hook, Mirror, Magnet Attachment)	
48-53-0113	Pipe Guide Accessory	

**M12™ M-SPECTOR™ AV Accessories**

**Items:**

48-53-0125	(17mm) AV 3' Replacement Digital Camera Cable	
48-53-0130	(9mm) AV 3' Replacement Analog Camera Cable	
48-53-0141	AV 3' Extension Cable	
48-53-0140	AV 8' Extension Cable	

**M12™ 160x120 Thermal Imager**

2260-21, NIST Certified 2260-21NST

**Specifications:**

Thermal Resolution	160 x 120
Temperature Range	14° to 662° F (-10° to 350° C)
Temperature Accuracy	±2% (±2° C)
Color Palettes	Iron, Rainbow, Gray
Visual Camera	Yes
Screen Size	3.5" LCD



**Includes:** (1) M12™ REDLITHIUM™ Compact Battery Pack, Thermal Imager Report Software, 2GB SD Card, (1) USB Cable, (1) SD Card Reader, Quick Reference Card, Statement of Calibration, Charger, Carrying Case



**M12™ LASER TEMP-GUN™ Thermometer Kit**

2276-21, NIST Certified 2276-21NST (2276-20, 2276-20NST Tool-Only)

**Specifications:**

Temperature Range	-22° to 1,472° F (-30° to 800° C)
Temperature Accuracy	1.5%
Distance to Spot	40:1
Contact Temperature Range	-40° to 1,022° F (-40° to 550° C)
Ambient Humidity / Dew Point Measurement	No
Display Resolution	0.1° C, 0.1° F



**Includes:** (1) M12™ REDLITHIUM™ Compact Battery Pack, (1) K-Type Thermocouple, Manual, Charger, Carrying Case

**M12™ LASER TEMP-GUN™ Thermometer for HVAC/R Kit**

2277-21, NIST Certified 2277-21NST (2277-20, 2277-20NST Tool-Only)

**Specifications:**

Temperature Range	-22° to 1,472° F (-30° to 800° C)
Temperature Accuracy	1.5%
Distance to Spot	40:1
Contact Temperature Range	-40° to 1,022° F (-40° to 550° C)
Ambient Humidity / Dew Point Measurement	Yes
Display Resolution	0.1° C, 0.1° F



**Includes:** (1) M12™ REDLITHIUM™ Compact Battery Pack, (1) K-Type Thermocouple, Manual, Charger, Carrying Case



**M12™ SUB-SCANNER™ Detection Tool Kit**

2291-21 (2291-20 Tool-Only)

**Specifications:**

Detects Rebar in Concrete	Yes
Depth (Metal)	6"
Ferrous / Non-Ferrous Differentiation	Yes
Depth (Stud)	1-1/2"
Stud Edges & Center	Yes
Push-Button Calibration	Yes



**Includes:** (1) M12™ REDLITHIUM™ Compact Battery Pack, Charger, Carrying Case

**M12™ LED Work Light**

49-24-0146

**Specifications:**

Light Type	LED
Lumens	86
Hands Free	Integrated Magnet
Head Rotation	90°

Battery and Charger Sold Separately



**M12™ LED Stick Light**

2351-20

**Specifications:**

Light Type	LED
Lumens	220
Hands Free	Multi-Position Stainless Steel Hook
Length	9-1/4"
Weight	0.6 lbs

Battery and Charger Sold Separately

**Related Accessory:**  
49-24-2351 – M12™ Stick Light Magnet  
Compatible with Milwaukee® M12™ LED Stick Light (2351-20).  
Holds light to metal surfaces for hands free use.



**M12™ 2-Beam Plumb Laser Kit**

2320-21 (2320-20 Tool-Only)

**Specifications:**

Accuracy	1/4" at 100'
Leveling Range	±4°
Laser Power	<1mW
Out of Level Indicator	Yes
Magnetic Base	Yes

**Includes:** (1) M12™ REDLITHIUM™ Compact Battery Pack, Charger, Carrying Case



**M12™ Tool Holster**

2335-20

**Specifications:**

Material	Heavy Duty Nylon
On-Board Bit Storage	Yes
Weight	0.3 lbs

Designed to fit most M12™ Drilling and Fastening Tools



**REDLITHIUM™ 2.0/XC4.0**

- Up to 2X More Run-Time
- Up to 20% More Power
- Over 2X More Recharges

**M12™ REDLITHIUM™ 2.0 Battery Pack**  
48-11-2420

**Specifications:**

Amp Hours	2.0
Cell Chemistry	LITHIUM-ION
Charge Time	45 minutes



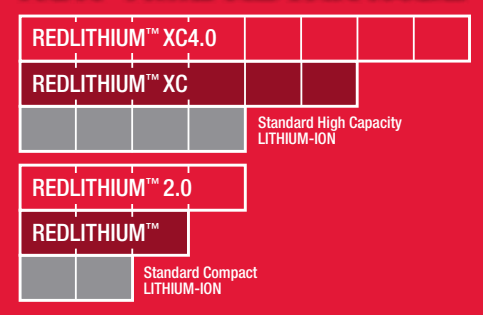
**M12™ REDLITHIUM™ XC4.0 Battery Pack**  
48-11-2440

**Specifications:**

Amp Hours	4.0
Cell Chemistry	LITHIUM-ION
Charge Time	90 minutes



**REDLITHIUM™ RUN-TIME ADVANTAGE**



**M12™ REDLITHIUM™ Compact Battery Pack**  
48-11-2401

**Specifications:**

Amp Hours	1.5
Cell Chemistry	LITHIUM-ION
Charge Time	30 minutes



**2-Pack Available**  
48-11-2411

**M12™ REDLITHIUM™ XC Extended Capacity Battery Pack**  
48-11-2402

**Specifications:**

Amp Hours	3.0
Cell Chemistry	LITHIUM-ION
Charge Time	60 minutes



**2-Pack Available**  
48-11-2412

**M12™ Jobsite Radio**  
2590-20

**Specifications:**

Tuner	Digital Reception with Signal Processor
Modes	AM/FM/AUX
Weight	3.5 lbs
Auxiliary Input	1/8" Stereo Jack
Powered By	All M12™ Batteries / AC Adapter



Batteries Sold Separately

**Includes:** (1) Auxiliary Input Cord, (1) AC Adapter, (2) AAA Batteries (for memory backup)

**M12™ Power Source**  
49-24-2310

**Specifications:**

On-Board Fuel Gauge	Yes
Powered By	All M12™ Batteries
2.1 Amp USB Port	Universal Charging for Smart Phones, Tablets, and Other Portable Electronic Devices



Batteries Sold Separately

**Powers all Milwaukee® M12™ Heated Gear**



**M12™ LITHIUM-ION Battery Charger\***  
48-59-2401

Integrated Hang-Holes	Yes
On-Board Indicator Light	Yes
Cell Voltage Monitoring	Yes



\*Compatible with All M12™ Batteries

**M12™ AC/DC Wall & Vehicle Charger\***  
2510-20

Integrated Hang-Holes	Yes
On-Board Indicator Light	Yes
Cell Voltage Monitoring	Yes



\*Compatible with All M12™ Batteries

**M12™ and M18™ Multi-Voltage Charger**  
48-59-1812

**Specifications:**

Compatibility	All M12™ and M18™ Batteries
Charge Sequence	Sequential (First In, First Charged)
Integrated Hang-Holes	Yes
On-Board Indicator Light	Yes
Cell Voltage Monitoring	Yes



Batteries Sold Separately

**M12™ Heated Jacket Kit - Red**  
2341 (2340 Jacket-Only)

**Specifications:**

Heat Zones	5 (Chest, Back, Pockets)
Heat Settings	3 Per Zone (High, Medium, Low)
Jacket Material	100% Polyester
Water / Wind Resistant	Yes
USB Charger	Yes
Run-Time	Up to 6 Hours



**Includes:** (1) M12™ REDLITHIUM™ Compact Battery Pack, (1) M12™ Power Source, Charger

**Available Sizes:** Small, Medium, Large, XL, 2X, 3X

**M12™ Heated Jacket Kit - Black**  
2345 (2344 Jacket-Only)

**Specifications:**

Heat Zones	5 (Chest, Back, Pockets)
Heat Settings	3 Per Zone (High, Medium, Low)
Jacket Material	100% Polyester
Water / Wind Resistant	Yes
USB Charger	Yes
Run-Time	Up to 6 Hours



**Includes:** (1) M12™ REDLITHIUM™ Compact Battery Pack, (1) M12™ Power Source, Charger

**Available Sizes:** Small, Medium, Large, XL, 2X, 3X

**M12™ Heated Jacket Kit Realtree Xtra® Camouflage**  
2343 (2342 Jacket-Only)

**Specifications:**

Heat Zones	5 (Chest, Back, Pockets)
Heat Settings	3 Per Zone (High, Medium, Low)
Jacket Material	Soft-Shell Fabric Blend for Reduced Noise During Movement
Water / Wind Resistant	Yes
USB Charger	Yes
Run-Time	Up to 6 Hours



**Includes:** (1) M12™ REDLITHIUM™ Compact Battery Pack, (1) M12™ Power Source, Charger

**Available Sizes:** Small, Medium, Large, XL, 2X, 3X

**M12™ High Visibility Heated Jacket Kit**  
2347 (2346 Jacket-Only)

**Specifications:**

Heat Zones	3 (Chest, Back)
Heat Settings	3 Per Zone (High, Medium, Low)
Jacket Material	ANSI Class III 100% Polyester
Water / Wind Resistant	Yes
Zip-In Removable Hood	Yes
Run-Time	Up to 6 Hours



**Includes:** (1) M12™ REDLITHIUM™ Compact Battery Pack, Charger

**Available Sizes:** Medium, Large, XL, 2X, 3X, 4X

**M12™ Heated Jacket 12V DC Plug Adapter**  
49-24-2301



**M18™ Power Source**  
49-24-2371

Batteries Sold Separately

**M12™ Heated Hoodie Kit - Red**  
2371 (2370 Hoodie-Only)

**Specifications:**

Heat Zones	3 (Chest, Back)
Heat Settings	3 Per Zone (High, Medium, Low)
Hoodie Material	Cotton/Polyester Blend
Water / Wind Resistant	No
Washer / Dryer Safer	Yes
Run-Time	Up to 6 Hours



**Includes:** (1) M12™ REDLITHIUM™ Compact Battery Pack, Charger

**Available Sizes:** Small, Medium, Large, XL, 2X, 3X

**M12™ Heated Hoodie Kit - Gray**  
2373 (2372 Hoodie-Only)

**Specifications:**

Heat Zones	3 (Chest, Back)
Heat Settings	3 Per Zone (High, Medium, Low)
Hoodie Material	Cotton/Polyester Blend
Water / Wind Resistant	No
Washer / Dryer Safer	Yes
Run-Time	Up to 6 Hours



**Includes:** (1) M12™ REDLITHIUM™ Compact Battery Pack, Charger

**Available Sizes:** Small, Medium, Large, XL, 2X, 3X

**M12™ Heated Hoodie Kit - Khaki**  
2375 (2374 Hoodie-Only)

**Specifications:**

Heat Zones	3 (Chest, Back)
Heat Settings	3 Per Zone (High, Medium, Low)
Hoodie Material	Cotton/Polyester Blend
Water / Wind Resistant	No
Washer / Dryer Safer	Yes
Run-Time	Up to 6 Hours



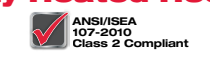
**Includes:** (1) M12™ REDLITHIUM™ Compact Battery Pack, Charger

**Available Sizes:** Small, Medium, Large, XL, 2X, 3X

**M12™ High Visibility Heated Hoodie Kit**  
2377 (2376 Hoodie-Only)

**Specifications:**

Heat Zones	3 (Chest, Back)
Heat Settings	3 Per Zone (High, Medium, Low)
Hoodie Material	ANSI Class II 100% Polyester
Water / Wind Resistant	Yes
Washer / Dryer Safer	Yes (Up to 25 Washes)
Run-Time	Up to 6 Hours



**Includes:** (1) M12™ REDLITHIUM™ Compact Battery Pack, Charger

**Available Sizes:** Small, Medium, Large, XL, 2X, 3X

**M12™ Heated Hand Warmers**  
Realtree Xtra® Camouflage 2321-21 (2321-20 Hand Warmer-Only)  
Black 2322-21 (2322-20 Hand Warmer-Only)

**Specifications:**

Heat Zones	2 (Front, Back)
Heat Settings	3 Per Zone (High, Medium, Low)
Hand Warmer Material	100% Polyester
Water / Wind Resistant	Yes
Adjustable Buckle-Strap	Yes



**Includes:** (1) M12™ REDLITHIUM™ Compact Battery Pack, Charger

**Available Sizes:** One Size Fits Most

Realtree Xtra © 2012 of Jordan Outdoor Enterprises, Ltd., all rights reserved

**M12™ COMBO KITS**

	2 - 3 PIECE KITS										4 - 8 PIECE KITS			
	2490-22	2491-22	2494-22	2495-22	2496-22	2497-22	2594-22	2597-22	2491-23	2493-23	2493-24	2498-24	2499-24	2495-28
<b>Kit Tool Total</b>	<b>2</b>	<b>2</b>	<b>2</b>	<b>2</b>	<b>2</b>	<b>2</b>	<b>2</b>	<b>2</b>	<b>3</b>	<b>3</b>	<b>4</b>	<b>4</b>	<b>4</b>	<b>8</b>
M12™ 1/4" Hex Screwdriver	■				■				■					
M12 FUEL™ 1/2" Drill/Driver							■							
M12 FUEL™ 1/2" Hammer Drill/Driver								■						
M12 FUEL™ 1/4" Hex Impact Driver							■	■						
M12™ 3/8" Drill/Driver			■	■						■	■	■	■	■
M12™ 3/8" Hammer Drill/Driver						■								
M12™ 3/8" Right Angle Drill/Driver														■
M12™ 1/4" Hex Impact Driver		■	■			■					■			■
M12™ 3/8" Impact Wrench									■	■	■			
M12™ 1/4" Ratchet										■				
M12™ HACKZALL® Recip Saw	■	■										■	■	■
M12™ Multi-Tool				■	■									■
M12™ Copper Tubing Cutter													■	
M12™ M-SPECTOR 360™ Rotating Inspection Scope														■
M12™ Flashlight									■	■	■	■	■	■
M12™ Jobsite Radio										■	■	■	■	■
<b>Also Includes</b>														
M12™ LITHIUM-ION Battery Charger	■	■	■	■	■	■	■	■	■	■	■	■	■	■
M12™ REDLITHIUM™ Compact Battery Pack	2	2	2	2	2	2			2	2	2	2	2	2
M12™ REDLITHIUM™ XC Extended Capacity Battery Pack														1
M12™ REDLITHIUM™ 2.0 Compact Battery Pack							1	1						
M12™ REDLITHIUM™ XC 4.0 Extended Capacity Battery Pack							1	1						
Carrying Case							■	■						
Contractor Bag	■	■	■	■	■	■			■	■	■	■	■	■

**M12 M18**

**MULTI-VOLTAGE CHARGER**



- Charges All M12™ and M18™ Batteries
- Charges Batteries Sequentially (First In, First Charged)

**Two Systems. One Charger. 90+ Solutions.**

**REDLITHIUM™ 2.0/XC4.0**

- Up to 2X More Run-Time
- Up to 20% More Power
- Over 2X More Recharges



**M12**



**WORLD LEADER IN CORDLESS INNOVATION**



**ADD TO YOUR SYSTEM 60+ TOOL-ONLY OPTIONS**

**M12**

**REDLITHIUM**



## **M18** REVOLUTIONARY PERFORMANCE

The Milwaukee® M18™ cordless system represents the ultimate synergy of professional grade power, light weight, extreme performance and superior ergonomics. These tools stand alone, with patented technologies, innovative motors and advanced electronics powered by REDLITHIUM™ battery technology for unmatched run-time. Offering more than 50 unique solutions, the M18™ family is the fastest growing 18V cordless system on the market.

The flagship of this family: the M18 FUEL™ collection – extreme-performance cordless power tools designed, engineered and built to deliver superior productivity. Milwaukee® affirms its industry leadership, integrating three ground-breaking technologies in a single package: a best-in-class POWERSTATE™ Brushless Motor, REDLITHIUM™ battery technology, and exclusive REDLINK PLUS™ Intelligence. M18 FUEL™ puts unrivaled durability, run-time, power and performance into the hands of the professional tradesman.



# DRIVEN TO OUTPERFORM.™

M18 FUEL™ is engineered for the most demanding tradesmen in the world. M18 FUEL™ delivers unrivaled performance in a compact structure and features three Milwaukee®-exclusive innovations — the POWERSTATE™ Brushless Motor, REDLITHIUM™ Battery Pack, and REDLINK PLUS™ Intelligence Hardware and Software — that deliver unmatched power, run-time and durability.

Simply put, M18 FUEL™ is best-in-class, full-circle technology that drives, protects and powers your cordless tools beyond the rest.

## M18 FUEL™

**LONGER** MOTOR LIFE | **MORE** POWER | **MORE** RUN-TIME

INCLUDED IN ALL M18 FUEL™ PRODUCTS



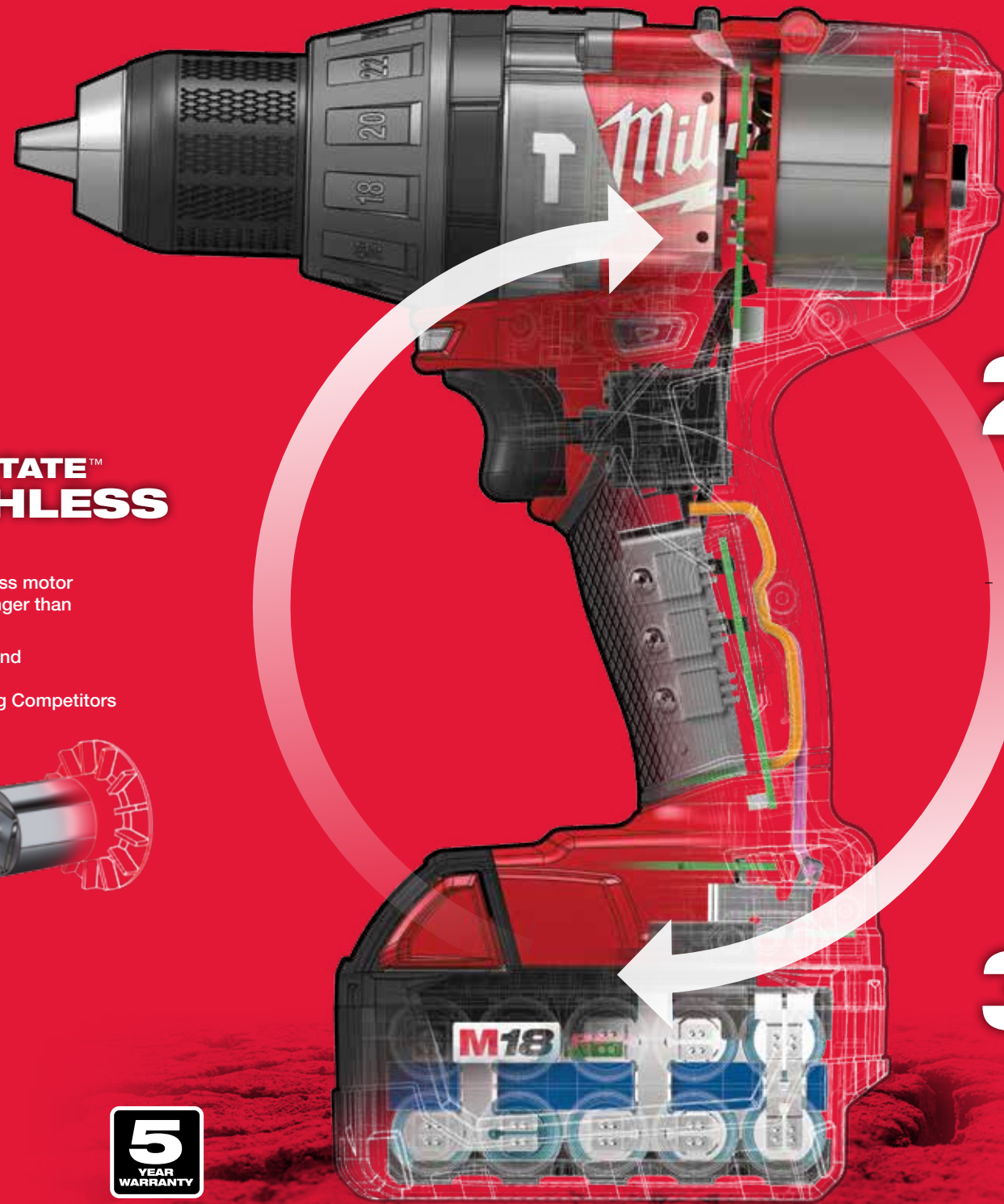
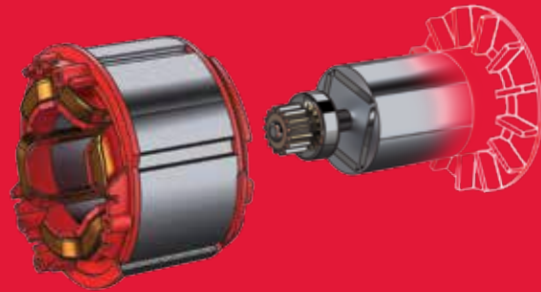
**UPGRADE.**  
**OUTWORK. OUTLAST.**

UP TO **2X** MORE RUN-TIME | UP TO **20%** MORE POWER | OVER **2X** MORE RECHARGES

### 1 POWERSTATE™ BRUSHLESS MOTOR

This best-in-class brushless motor works harder and lives longer than all leading competitors.

- Milwaukee® Designed and Built Brushless Motor
- Outperforms All Leading Competitors
- Longer Motor Life



### 2 REDLINK PLUS™ INTELLIGENCE

The most advanced system of hardware and software in cordless power tool electronics today.

- Most Advanced Electronic System on the Market for Maximum Performance
- Total System Communication with Overload Protection Increases Tool Life



### 3 REDLITHIUM™ 2.0 & XC4.0 BATTERY PACKS

Compatible with the entire M18™ system, it delivers more run-time, power and recharges than the competition.

- Most Durable Pack on the Market
- Over 2X More Recharges than Leading Competitors
- Fuel Gauge Displays Remaining Charge
- Operates Below -18° C / 0° F



**M18 FUEL**  
**1/2" Drill/Driver Kit**

2603-22 (2603-20 Tool-Only)

**Specifications:**

Peak Torque	725 in-lbs
RPM	0 – 550 / 0 – 1,850
Chuck Type	1/2" Metal Single Sleeve
Length	7-7/8"
Weight	4.9 lbs

**Includes:** (2) M18™ REDLITHIUM™ XC4.0 Battery Packs, Side Handle, Multi-Voltage Charger, Carrying Case



**M18 FUEL**  
**1/2" Hammer Drill/Driver Kit**

2604-22 (2604-20 Tool-Only)

**Specifications:**

Peak Torque	725 in-lbs
RPM	0 – 550 / 0 – 1,850
BPM	0 – 31,450
Chuck Type	1/2" Metal Single Sleeve
Length	8-1/8"
Weight	5.0 lbs

**Includes:** (2) M18™ REDLITHIUM™ XC4.0 Battery Packs, Side Handle, Multi-Voltage Charger, Carrying Case



**M18 FUEL**  
**1/2" Drill/Driver Kit**

2603-22CT (2603-20 Tool-Only)

**Specifications:**

Peak Torque	650 in-lbs
RPM	0 – 550 / 0 – 1,850
Chuck Type	1/2" Metal Single Sleeve
Length	7-7/8"
Weight	4.4 lbs

**Includes:** (2) M18™ REDLITHIUM™ 2.0 Battery Packs, Side Handle, Multi-Voltage Charger, Carrying Case



**M18 FUEL**  
**1/2" Hammer Drill/Driver Kit**

2604-22CT (2604-20 Tool-Only)

**Specifications:**

Peak Torque	650 in-lbs
RPM	0 – 550 / 0 – 1,850
BPM	0 – 31,450
Chuck Type	1/2" Metal Single Sleeve
Length	8-1/8"
Weight	4.5 lbs

**Includes:** (2) M18™ REDLITHIUM™ 2.0 Battery Packs, Side Handle, Multi-Voltage Charger, Carrying Case



**M18™ 1/2" Compact Drill/Driver Kit**

2606-22CT (2606-20 Tool-Only)

**Specifications:**

Peak Torque	500 in-lbs
RPM	0 – 450 / 0 – 1,800
Chuck Type	1/2" Metal Single Sleeve
Length	7-1/4"
Weight	3.8 lbs

**Includes:** (2) M18™ REDLITHIUM™ Compact Battery Packs, Multi-Voltage Charger, Carrying Case



**M18™ 1/2" Hammer Drill/Driver Kit**

2607-22CT (2607-20 Tool-Only)

**Specifications:**

Peak Torque	500 in-lbs
RPM	0 – 400 / 0 – 1,800
BPM	0 – 28,800
Chuck Type	1/2" Metal Single Sleeve
Length	7-1/4"
Weight	3.9 lbs

**Includes:** (2) M18™ REDLITHIUM™ Compact Battery Packs, Multi-Voltage Charger, Carrying Case



**M18™ 3/8" Right Angle Drill/Driver Kit**

2615-21 (2615-20 Tool-Only)

**Specifications:**

Peak Torque	125 in-lbs
RPM	0 – 1,500
Clutch Settings	11 Settings plus Drill Mode
Chuck Type	3/8" Single Sleeve
Head Profile	3-3/4"
Weight	4.3 lbs

**Includes:** (1) M18™ REDLITHIUM™ XC Extended Capacity Battery Pack, Multi-Voltage Charger, Carrying Case



**M18™ 3/8" Right Angle Drill/Driver Kit**

2615-21CT (2615-20 Tool-Only)

**Specifications:**

Peak Torque	100 in-lbs
RPM	0 – 1,500
Clutch Settings	11 Settings plus Drill Mode
Chuck Type	3/8" Single Sleeve
Head Profile	3-3/4"
Weight	3.7 lbs

**Includes:** (1) M18™ REDLITHIUM™ Compact Battery Pack, Multi-Voltage Charger, Carrying Case



**M18 FUEL**  
**1/4" Hex Impact Driver Kit**

2653-22 (2653-20 Tool-Only)

**Specifications:**

Fastening Torque (3 Modes)	200 / 700 / 1,600 in-lbs
IPM	0 – 3,600
RPM (3 Modes)	0 – 850 / 0 – 2,100 / 0 – 2,900
Chuck Type	1/4" Hex Quick Change
Length	5-1/2"
Weight	3.6 lbs

**Includes:** (2) M18™ REDLITHIUM™ XC4.0 Battery Packs, Belt Clip, Multi-Voltage Charger, Carrying Case



**M18 FUEL**  
**1/4" Hex Impact Driver Kit**

2653-22CT (2653-20 Tool-Only)

**Specifications:**

Fastening Torque (3 Modes)	200 / 700 / 1,600 in-lbs
IPM	0 – 3,600
RPM (3 Modes)	0 – 850 / 0 – 2,100 / 0 – 2,900
Chuck Type	1/4" Hex Quick Change
Length	5-1/2"
Weight	3.0 lbs

**Includes:** (2) M18™ REDLITHIUM™ 2.0 Battery Packs, Belt Clip, Multi-Voltage Charger, Carrying Case



**M18™ 5/8" SDS Plus Rotary Hammer Kit**

2612-22, 2612-21 (2612-20 Tool-Only)

**Specifications:**

RPM	0 – 1,300
BPM	0 – 7,000
2-Mode Operation	Rotary Hammer and Rotation Only
Weight	5.5 lbs

**Includes:** 2612-22 (2) M18™ REDLITHIUM™ XC Extended Capacity Battery Packs, Side Handle, Depth Rod, Multi-Voltage Charger, Carrying Case; 2612-21 Includes (1) M18™ REDLITHIUM™ XC Extended Capacity Battery Pack Compatible with 2306-22 M12™ HAMMERVAC™ Universal Dust Extractor



**M18™ 1/4" 2-Speed Impact Driver Kit**

2657-22 (2657-20 Tool-Only)

**Specifications:**

Fastening Torque	1,500 in-lbs
IPM	0 – 3,450
RPM	0 – 2,750
Chuck Type	1/4" Hex Quick Change
Length	5-1/2"
Weight	3.7 lbs

**Includes:** (2) M18™ REDLITHIUM™ XC Extended Capacity Battery Packs, Belt Clip, Multi-Voltage Charger, Carrying Case



**M18™ 7/8" SDS Plus Rotary Hammer Kit**

2605-22 (2605-20 Tool-Only)

**Specifications:**

Impact Energy	1.8 ft-lbs (2.4J)
RPM	0 – 1,400
BPM	0 – 4,800
3-Mode Operation	Hammer Only, Rotary Hammer, Rotation Only
Weight	7.2 lbs

**Includes:** (2) M18™ REDLITHIUM™ XC Extended Capacity Battery Packs, Side Handle, Depth Rod, Multi-Voltage Charger, Carrying Case Compatible with 2306-22 M12™ HAMMERVAC™ Universal Dust Extractor



**M18™ 1/4" 2 Speed Impact Driver Kit**

2657-22CT (2657-20 Tool-Only)

**Specifications:**

Fastening Torque	1,500 in-lbs
IPM	0 – 3,450
RPM	0 – 2,750
Chuck Type	1/4" Hex Quick Change
Length	5-1/2"
Weight	3.1 lbs

**Includes:** (2) M18™ REDLITHIUM™ Compact Battery Packs, Belt Clip, Multi-Voltage Charger, Carrying Case



**M18 FUEL**  
**3/8" Impact Wrench Kit**

2654-22 (2654-20 Tool-Only)

**Specifications:**

Fastening Torque (3 Modes)	30 / 75 / 200 ft-lbs
IPM	0 – 3,100
RPM (3 Modes)	0 – 900 / 0 – 1,600 / 0 – 2,400
Anvil	3/8" Friction Ring
Length	6"
Weight	3.8 lbs

**Includes:** (2) M18™ REDLITHIUM™ XC4.0 Battery Packs, Belt Clip, Multi-Voltage Charger, Carrying Case



**M18 FUEL**  
**3/8" Impact Wrench Kit**

2654-22CT (2654-20 Tool-Only)

**Specifications:**

Fastening Torque (3 Modes)	30 / 75 / 200 ft-lbs
IPM	0 – 3,100
RPM (3 Modes)	0 – 900 / 0 – 1,600 / 0 – 2,400
Anvil	3/8" Friction Ring
Length	6"
Weight	3.2 lbs

**Includes:** (2) M18™ REDLITHIUM™ 2.0 Battery Packs, Belt Clip, Multi-Voltage Charger, Carrying Case



**M18 FUEL**  
**1/2" Impact Wrench Kit**

2655B-22 (2655B-20 Tool-Only)

**Specifications:**

Fastening Torque (3 Modes)	80 / 120 / 210 ft-lbs
IPM	0 – 3,100
RPM (3 Modes)	0 – 1,700 / 0 – 2,000 / 0 – 2,400
Anvil	1/2" Ball Detent
Length	6"
Weight	3.9 lbs

**Includes:** (2) M18™ REDLITHIUM™ XC4.0 Battery Packs, Belt Clip, Multi-Voltage Charger, Carrying Case



**M18™ 3/8" Compact Impact Wrench Kit**

2658-22 (2658-20 Tool-Only)

**Specifications:**

Fastening Torque	166 ft-lbs
IPM	0 – 3,350
RPM	0 – 2,450
Anvil	3/8" Friction Ring
Length	5-3/4"
Weight	4.1 lbs

**Includes:** (2) M18™ REDLITHIUM™ XC Extended Capacity Battery Packs, Belt Clip, Multi-Voltage Charger, Carrying Case



**M18™ 1/2" Compact Impact Wrench Kit**

2659-22 (2659-20 Tool-Only)

**Specifications:**

Fastening Torque	183 ft-lbs
IPM	0 – 3,200
RPM	0 – 2,200
Anvil	1/2" Pin Detent
Length	5-3/4"
Weight	4.1 lbs

**Includes:** (2) M18™ REDLITHIUM™ XC Extended Capacity Battery Packs, Belt Clip, Multi-Voltage Charger, Carrying Case



**M18 FUEL**  
**1/2" High Torque Impact Wrench w/ Pin Detent Kit**

2762-22 (2762-20 Tool-Only)

**Specifications:**

Max Fastening Torque (2 Modes)	350 / 600 ft-lbs
Nut-Busting Torque	900 ft-lbs
IPM / RPM (2 Modes)	0 – 2,300; 0 – 1,200 / 0 – 1,700
Anvil	1/2" Pin Detent
Length	8-3/4"
Weight	7.0 lbs

**Includes:** (2) M18™ REDLITHIUM™ XC4.0 Battery Packs, Multi-Voltage Charger, Carrying Case



**M18 FUEL**  
**1/2" High Torque Impact Wrench w/ Friction Ring Kit**

2763-22 (2763-20 Tool-Only)

**Specifications:**

Max Fastening Torque (2 Modes)	100 / 700 ft-lbs
Nut-Busting Torque	1,100 ft-lbs
IPM / RPM (2 Modes)	0 – 2,300; 0 – 350 / 0 – 1,700
Anvil	1/2" Friction Ring
Length	9"
Weight	7.2 lbs

**Includes:** (2) M18™ REDLITHIUM™ XC4.0 Battery Packs, Multi-Voltage Charger, Carrying Case



**M18 FUEL**  
**3/4" High Torque Impact Wrench w/ Friction Ring Kit**

2764-22 (2764-20 Tool-Only)

**Specifications:**

Max Fastening Torque (2 Modes)	375 / 750 ft-lbs
Nut-Busting Torque	1,200 ft-lbs
IPM / RPM (2 Modes)	0 – 2,300; 0 – 1,200 / 0 – 1,700
Anvil	3/4" Friction Ring
Length	9"
Weight	7.3 lbs

**Includes:** (2) M18™ REDLITHIUM™ XC4.0 Battery Packs, Multi-Voltage Charger, Carrying Case



**M18 FUEL**  
**7/16" Hex Utility Impacting Drill Kit**

2765-22 (2765-20 Tool-Only)

**Specifications:**

Max Fastening Torque (2 Modes)	300 / 500 ft-lbs
IPM / RPM (2 Modes)	0 – 2,300; 0 – 1,200 / 0 – 1,700
Anvil	7/16" Hex
Length	8-3/4"
Weight	7.1 lbs

**Includes:** (2) M18™ REDLITHIUM™ XC Extended Capacity Battery Packs, AC/DC Charger, Hanger Ring, Banger Bracket, Contractor Bag



**M18™ 1/2" High Torque Impact Wrench w/Pin Detent Kit**

2662-22 (2662-20 Tool-Only)

**Specifications:**

Fastening Torque	450 ft-lbs
Breakaway Torque	640 ft-lbs
RPM / IPM	0 – 1,900 / 0 – 2,200
Anvil	1/2" Pin Detent
Length	8-7/8"
Weight	6.7 lbs

**Includes:** (2) M18™ REDLITHIUM™ XC Extended Capacity Battery Packs, Multi-Voltage Charger, Carrying Case



**M18™ 1/2" High Torque Impact Wrench w/Friction Ring Kit**

2663-22 (2663-20 Tool-Only)

**Specifications:**

Fastening Torque	450 ft-lbs
Breakaway Torque	640 ft-lbs
RPM / IPM	0 – 1,900 / 0 – 2,200
Anvil	1/2" Friction Ring
Length	8-7/8"
Weight	6.7 lbs

**Includes:** (2) M18™ REDLITHIUM™ XC Extended Capacity Battery Packs, Multi-Voltage Charger, Carrying Case



**M18™ 3/4" High Torque Impact Wrench w/Friction Ring Kit**

2664-22 (2664-20 Tool-Only)

**Specifications:**

Fastening Torque	525 ft-lbs
Breakaway Torque	700 ft-lbs
RPM / IPM	0 – 1,900 / 0 – 2,200
Anvil	3/4" Friction Ring
Length	9"
Weight	6.8 lbs

**Includes:** (2) M18™ REDLITHIUM™ XC Extended Capacity Battery Packs, Multi-Voltage Charger, Carrying Case



**M18™ 7/16" Hex Utility Impacting Drill Kit**

2665-22 (2665-20 Tool-Only)

**Specifications:**

Fastening Torque	450 ft-lbs
RPM / IPM	0 – 1,900 / 0 – 2,200
Anvil	7/16" Hex
Length	9-1/2"
Weight	7.0 lbs

**Includes:** (2) M18™ REDLITHIUM™ XC Extended Capacity Battery Packs, Multi-Voltage Charger, Contractor Bag







**M18™ 2-Speed Grease Gun Kit**

2646-22CT, 2646-21CT (2646-20 Tool-Only)

**Specifications:**

Output Pressure	Up to 10,000 PSI (690 BAR)
Run-Time	Up to 10 Cartridges Per Charge
Grease Capacity	14 oz Cartridge, 16 oz Bulk, 16 oz Suction
Air Bleeder Valve	Yes
Weight	8.5 lbs



**Includes:** 2646-22CT (2) M18™ REDLITHIUM™ Compact Battery Packs, (1) 48" Flex Hose with Spring Guard, (1) High Pressure Grease Coupler, (1) Shoulder Strap, Multi-Voltage Charger, Carrying Case; 2646-21CT Includes (1) M18™ REDLITHIUM™ Compact Battery Pack

**M18™ Grease Gun Accessories**

49-16-2646 M18™ Grease Gun 400g Clear Barrel



49-16-2647 M18™ Replacement Grease Gun Hose with High Pressure Coupler



49-16-2648 M18™ Right Angle Grease Gun Coupler



49-16-2649 M18™ High Pressure Grease Coupler 2-Pack



**M18™ 10 oz Caulk and Adhesive Gun Kit**

2641-21CT (2641-20 Tool-Only)

**Specifications:**

Force	950 lbs
Inches Per Minute	0 – 21
Speed Settings	6
Auto-Reverse Anti-Drip	Yes
Weight	5.8 lbs



**Includes:** (1) M18™ REDLITHIUM™ Compact Battery Pack, 10 oz Cartridge, M18™ 10 oz Plunger Rod and Piston Assembly, Multi-Voltage Charger

**M18™ 20 oz Aluminum Barrel Sausage Style Caulk and Adhesive Gun Kit**

2642-21CT

**Specifications:**

Force	950 lbs
Inches Per Minute	0 – 21
Speed Settings	6
Auto-Reverse Anti-Drip	Yes
Weight	6.5 lbs



**Includes:** (1) M18™ REDLITHIUM™ Compact Battery Pack, 20 oz Aluminum Sausage Style Barrel, M18™ 20 oz Plunger Rod and Piston Assembly, Nozzle, Multi-Voltage Charger

**M18™ 20 oz Clear Barrel Sausage Style Caulk and Adhesive Gun Kit**

2643-21CT

**Specifications:**

Force	950 lbs
Inches Per Minute	0 – 21
Speed Settings	6
Auto-Reverse Anti-Drip	Yes
Weight	6.6 lbs



**Includes:** (1) M18™ REDLITHIUM™ Compact Battery Pack, 20 oz Clear Sausage Style Barrel, M18™ 20 oz Plunger Rod and Piston Assembly, Nozzle, Multi-Voltage Charger



**M18™ Caulk Gun Accessories**

48-08-1076 M18™ 10 oz Caulk and Adhesive Gun Conversion Kit



48-08-1093 M18™ 20 oz Aluminum Barrel Sausage Style Caulk and Adhesive Gun Conversion Kit



48-08-1094 M18™ 20 oz Clear Barrel Sausage Style Caulk and Adhesive Gun Conversion Kit



48-08-1095 M18™ Quart Caulk and Adhesive Gun Conversion Kit



48-08-1091 20 oz Aluminum Barrel Kit



48-08-1096 20 oz Clear Barrel Kit



31-12-0700 Caulk Gun Nozzle – Black



**M18™ FUEL SAWZALL® Recip Saw Kit**

2720-22, 2720-21 (2720-20 Tool-Only)

**Specifications:**

SPM	0 – 3,000
Stroke Length	1-1/8"
Blade Clamp	Lever-Action QUIK-LOK® (Accepts all SAWZALL® Blades)
Anti-Vibration	Yes
Weight	8.9 lbs



**Includes:** 2720-22 (2) M18™ REDLITHIUM™ XC4.0 Battery Packs, (1) Blade, Multi-Voltage Charger, Carrying Case; 2720-21 Includes (1) M18™ REDLITHIUM™ XC4.0 Battery Pack

**M18™ SAWZALL® Recip Saw Kit**

2620-22, 2620-21 (2620-20 Tool-Only)

**Specifications:**

SPM	0 – 3,200
Stroke Length	1"
Blade Clamp	Lever-Action QUIK-LOK® (Accepts all SAWZALL® Blades)
Anti-Vibration	Yes
Weight	7.9 lbs



**Includes:** 2620-22 (2) M18™ REDLITHIUM™ XC Extended Capacity Battery Packs, (1) Blade, Multi-Voltage Charger, Carrying Case; 2620-21 Includes (1) M18™ REDLITHIUM™ XC Extended Capacity Battery Pack

**M18™ HACKZALL® One-Handed Recip Saw Kit**

2625-21 (2625-20 Tool-Only)

**Specifications:**

SPM	0 – 3,000
Stroke Length	3/4"
Blade Clamp	QUIK-LOK® (Accepts all SAWZALL® Blades)
Anti-Vibration	Yes
Weight	5.6 lbs



**Includes:** (1) M18™ REDLITHIUM™ XC Extended Capacity Battery Pack, (1) Blade, Multi-Voltage Charger, Contractor Bag

**M18™ HACKZALL® One-Handed Recip Saw Kit**

2625-21CT (2625-20 Tool-Only)

**Specifications:**

SPM	0 – 3,000
Stroke Length	3/4"
Blade Clamp	QUIK-LOK® (Accepts all SAWZALL® Blades)
Anti-Vibration	Yes
Weight	5.0 lbs



**Includes:** (1) M18™ REDLITHIUM™ Compact Battery Pack, (1) Blade, Multi-Voltage Charger, Contractor Bag

**M18™ FUEL 6-1/2" Circular Saw Kit**

2730-22, 2730-21 (2730-20 Tool-Only)

**Specifications:**

RPM	5,500
Bevel Capacity	50°
Cut Capacity	2-3/16" at 90°; 1-5/8" at 45°
Arbor	5/8"
Blade Guards	Magnesium
Weight	8.0 lbs



**Includes:** 2730-22 (2) M18™ REDLITHIUM™ XC4.0 Extended Capacity Battery Packs, (1) Circular Saw Blade, Wrench, Multi-Voltage Charger, Contractor Bag; 2730-21 Includes (1) M18™ REDLITHIUM™ XC4.0 Extended Capacity Battery Pack

**M18™ 6-1/2" Circular Saw Kit**

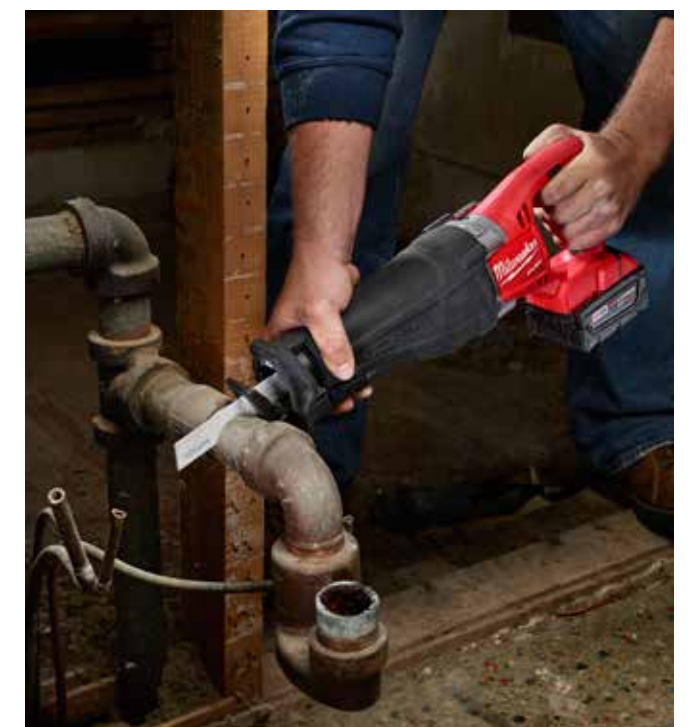
2630-22 (2630-20 Tool-Only)

**Specifications:**

RPM	3,500
Bevel Capacity	50°
Cut Capacity	2-1/8" at 90°; 1-9/16" at 45°
Arbor	5/8"
Blade Guards	Magnesium
Weight	8.5 lbs



**Includes:** (2) M18™ REDLITHIUM™ XC Extended Capacity Battery Packs, (1) Circular Saw Blade, Rip Fence, Wrench, Multi-Voltage Charger, Contractor Bag



**M18™ Jig Saw Kit**

2645-22 (2645-20 Tool-Only)

**Specifications:**

SPM	0 – 2,700
Stroke Length	1"
Bevel Capacity	45° (Positive Locks at 0°, 15°, 30° and 45°)
Blade Clamp	QUIK-LOK® T-Shank
Orbital Settings	5
Weight	7.7 lbs



**Includes:** (2) M18™ REDLITHIUM™ XC Extended Capacity Battery Packs, (1) Jig Saw Blade, Non-Marring Shoe, Multi-Voltage Charger, Carrying Case

**M18™ Metal Cutting Saw Kit**

2682-22 (2682-20 Tool-Only)

**Specifications:**

RPM	3,600
Cut Capacity	1/8" – 2"
Blade Size	5-3/8"
Shoe	Stainless Steel
Weight	5.8 lbs



**Includes:** (2) M18™ REDLITHIUM™ XC Extended Capacity Battery Packs, (1) 30T METAL TECH™ Carbide-Tipped Blade, Blade Wrench, Multi-Voltage Charger, Contractor Bag



**M18™ Band Saw Kit**

2629-22 (2629-20 Tool-Only)

**Specifications:**

SFPM	480
Cut Capacity	3-1/4" x 3-1/4"
Weight	10.2 lbs
Shoe	Tool Free
LED Light	Yes



**Includes:** (2) M18™ REDLITHIUM™ XC Extended Capacity Battery Packs, Blade, Multi-Voltage Charger, Carrying Case

**M18™ Multi-Tool Kit**

2626-22, 2626-22CT (2626-20 Tool-Only)

**Specifications:**

Speed Settings	12
OPM	11,000 – 18,000
Universal Adapter	Yes
Tool Free Accessory Change	Yes
Length	14"
Weight	4.2 lbs



**Includes:** 2626-22 (2) M18™ REDLITHIUM™ XC Extended Capacity Battery Packs, (1) Wood Cutting Blade, (1) Sanding Pad, (5) Assorted Sanding Sheets, Multi-Voltage Charger, Contractor Bag; 2626-22CT Includes (2) M18™ REDLITHIUM™ Compact Battery Packs



**M18 FUEL 4-1/2" / 5" Grinder Slide Switch, Lock-On Kit**

2781-22, 2781-21 (2781-20 Tool-Only)

**Specifications:**

RPM	8,500
Power to Grind	Yes
Overload Protection	Yes
Electronic Clutch	Yes
Tool Free Accessory Change & Guard	Yes



**Includes:** 2781-22 (2) M18™ REDLITHIUM™ XC4.0 Battery Packs, Multi-Voltage Charger, Carrying Case; 2781-21 Includes (1) M18™ REDLITHIUM™ XC4.0 Battery Pack

**M18 FUEL 4-1/2" / 5" Grinder Paddle Switch, No-Lock Kit**

2780-22 (2780-20 Tool-Only)

**Specifications:**

RPM	8,500
Power to Grind	Yes
Overload Protection	Yes
Electronic Clutch	Yes
Tool Free Accessory Change & Guard	Yes



**Includes:** (2) M18™ REDLITHIUM™ XC4.0 Battery Packs, Multi-Voltage Charger, Carrying Case



**M18™ 4-1/2" Cut-Off / Grinder Kit**

2680-22 (2680-20 Tool-Only)

**Specifications:**

RPM	9,000
Switch	Paddle
Guard Adjustment	Tool Free
Overload Protection	Yes
Weight	5.9 lbs



**Includes:** (2) M18™ REDLITHIUM™ XC Extended Capacity Battery Packs, (1) Type 1 Guard, (1) Type 27 Guard, (1) Spanner Wrench, (1) Side Handle, Multi-Voltage Charger, Contractor Bag

**M18™ FORCE LOGIC™ Long Throw Press Tool Kit**

2673-22L (2673-20L No Jaw Kit)

**Specifications:**

Capacity	1/2" – 4" CU, 1/2" – 2" SS
Weight	10.1 lbs
Length	20-1/8"
Calibration Interval	40,000 Cycles (LED Indicator)
Approximate Cycle Time	5 Seconds, 10 Seconds at Full Stroke
Press Force	7,200 lbs



**Includes:** 2673-22L (2) M18™ REDLITHIUM™ XC Extended Capacity Battery Packs, (3) Jaws 1/2" – 1", Multi-Voltage Charger, Carrying Case; 2673-20L Includes No Jaws

**M18™ FORCE LOGIC™ Jaws and Rings - Stainless Steel**

**Specifications:**

49-16-2650S	1/2" SS Jaw
49-16-2651S	3/4" SS Jaw
49-16-2652S	1" SS Jaw
49-16-2654S	1-1/2" SS Ring
49-16-2655S	2" SS Ring
49-16-2659S	SS Ring Jaw 2
49-16-2691	FORCE LOGIC SS Press Ring 1-1/2" – 2" Kit



Jaws and Rings designed for use with GRINNELL® G-Press Stainless Steel Fittings  
Jaws compatible with both 2673-20 and 2673-20L M18™ Press Tools  
Rings compatible with 2673-20L only

**M18™ FORCE LOGIC™ Press Tool Kit**

2673-22 (2673-20 No Jaw Kit)

**Specifications:**

Capacity	1/2" – 4" CU, 1/2" – 1" SS
Weight	8.0 lbs
Length	16-3/4"
Calibration Interval	40,000 Cycles (LED Indicator)
Approximate Cycle Time	5 Seconds
Press Force	7,200 lbs



**Includes:** 2673-22 (2) M18™ REDLITHIUM™ XC Extended Capacity Battery Packs, (6) Jaws 1/2" – 2", Multi-Voltage Charger, Carrying Case; 2673-20 Includes No Jaws

**M18™ FORCE LOGIC™ Jaws and Rings - Standard**

**Specifications:**

49-16-2650	1/2" Jaw
49-16-2651	3/4" Jaw
49-16-2652	1" Jaw
49-16-2653	1-1/4" Jaw
49-16-2654	1-1/2" Jaw
49-16-2655	2" Jaw
49-16-2656	2-1/2" Ring
49-16-2657	3" Ring
49-16-2658	4" Ring
49-16-2659	Ring Jaw
49-16-2690	FORCE LOGIC™ Press Ring 2-1/2" – 4" Kit



Jaws designed for use with all major fitting manufacturers; Rings designed for use with VIEGA®, APOLLO®, and GRINNELL® large diameter copper systems

Jaws and Rings compatible with both 2673-20 and 2673-20L M18™ Press Tools

APOLLO® is a registered trademark of Conbraco Industries, Inc.  
GRINNELL® is a registered trademark of Grinnell LLC  
VIEGA® is a registered trademark of Viega GmbH & Co.



**M18™ FORCE LOGIC™ High-Capacity Knockout Tool**

2676-23, 2676-22 (2676-20 No Punches & Dies)

**Specifications:**

Mild Steel Capacity	1/2" – 4"
Stainless Steel Capacity	1/2" – 4"
Output Force	10 Ton
Quick-Connect Draw Stud	Yes
Tool Weight	7.2 lbs
Height	5-1/2"



**Includes:** 2676-23 (2) M18™ REDLITHIUM™ XC Extended Capacity Battery Packs, Exact™ Knockout Punches and Dies 1/2" – 4", (2) Draw Studs, Quick Connect Assembly, Carrying Case; 2673-22 Includes 1/2" – 2" Exact™ Knockout Punches and Dies; 2673-20 Includes no Punches or Dies

**M18™ Exact™ Knockout Punches & Dies**

**Specifications:**

<b>Sets</b>	
49-16-2694	EXACT™ KO Punch Set 1/2" – 2" w/ Wrench
49-16-2692	EXACT™ KO Punch Set 1/2" – 1-1/4"
49-16-2693	EXACT™ KO Punch Set 1/2" – 2"
49-16-2695	EXACT™ KO Punch Set 2-1/2", 3", 3-1/2", 4"

**Open Stock**

49-16-2660	1/2" Die
49-16-2661	1/2" Punch
49-16-2662	3/4" Die
49-16-2663	3/4" Punch
49-16-2664	1" Die
49-16-2665	1" Punch
49-16-2666	1-1/4" Die
49-16-2667	1-1/4" Punch
49-16-2668	1-1/2" Die
49-16-2669	1-1/2" Punch
49-16-2670	2" Die
49-16-2671	2" Punch
49-16-2672	2-1/2" Die
49-16-2673	2-1/2" Punch
49-16-2674	3" Die
49-16-2675	3" Punch
49-16-2676	3-1/2" Die
49-16-2677	3-1/2" Punch
49-16-2678	4" Die
49-16-2679	4" Punch
49-16-2621	3/8" Ball Bearing Draw Stud
49-16-2622	3/4" Ball Bearing Draw Stud
49-16-2680	7/16" Draw Stud
49-16-2681	3/4" Draw Stud
49-16-2682	1-1/8" Draw Stud

All EXACT™ Knockout Punches & Dies are designed for use in mild and stainless steel



**M18™ COMBO KITS**

	2 PIECE KITS								3 - 4 PIECE KITS						LARGE KITS						
	2793-22	2690-22	2691-22	2693-22	2694-22	2695-22	2697-22	2697-22CT	2698-22	2791-22CT	2797-22	2691-23	2696-23	2690-24	2692-24	2694-24	2695-24	2696-24	2696-26	2696-29	2696-15
Kit Tool Total	2	2	2	2	2	2	2	2	2	2	3	3	4	4	4	4	4	6	9	15	
M18™ 1/2" Compact Drill/Driver			■								■										
M18 FUEL™ 1/2" Drill/Driver									■												
M18 FUEL™ 1/2" Hammer Drill/Driver										■											
M18™ 1/2" Hammer Drill/Driver				■	■	■	■	■							■	■	■	■	■	■	■
M18™ 1/2" High Performance Hammer Drill/Driver	■												■	■							
M18™ 3/8" Right Angle Drill/Driver																			■	■	
M18™ 1/4" Hex Compact Impact Driver*		■					■	■							■	■	■	■	■	■	■
M18 FUEL™ 1/4" Hex Impact Driver									■	■											
M18™ 3/8" Compact Impact Wrench			■								■	■									
M18™ 1/2" Compact Impact Wrench																					■
M18™ 1/2" High Torque Impact Wrench	■											■							■	■	■
M18™ 7/8" SDS Plus Rotary Hammer																					■
M12™ 1/4" Ratchet	■																				
M18™ HACKZALL® One-Handed Recip Saw					■											■					
M18™ SAWZALL® Recip Saw	■	■		■									■	■	■	■	■	■	■	■	■
M18™ Jig Saw																				■	■
M18™ 6-1/2" Circular Saw													■	■				■	■	■	■
M18™ 5-3/8" Metal Cutting Saw								■													■
M18™ 4-1/2" Cut-Off / Grinder																		■	■	■	■
M18™ Band Saw																					■
M18™ Work Light			■								■	■	■	■	■	■	■	■	■	■	■
Jobsite Radio																					■
M18™ Wet/Dry Vacuum																					■
<b>Also Includes</b>																					
M12™/M18™ Multi-Voltage Charger	■	■	■	■	■	■	■	■	■	■	■	■	■	■	■	■	■	■	■	■	■
M18™ REDLITHIUM™ Compact Battery Pack			2	2				2			2										
M18™ REDLITHIUM™ XC Extended Capacity Battery Pack	1	2			2	2	2	2				2	2	2	2	2	2	2	2	4	
M18™ REDLITHIUM™ 2.0 Battery Pack									2												
M18™ REDLITHIUM™ XC4.0 Battery Pack										2											
M12™ REDLITHIUM™ Compact Battery Pack	1																				
Carrying Case									■	■											
Contractor Bag	■	■	■	■	■	■	■	■	■	■	■	■	■	■	■	■	■	■	■	2	3

\*M18™ 1/4" Hex Compact Impact Driver is the single, variable speed model

**M12 M18**

**MULTI-VOLTAGE CHARGER**

- Charges All M12™ and M18™ Batteries
- Charges Batteries Sequentially (First In, First Charged)

**Two Systems. One Charger. 90+ Solutions.**



**REDLITHIUM™ 2.0/XC4.0**

- Up to 2X More Run-Time
- Up to 20% More Power
- Over 2X More Recharges

**M18**



**WORLD LEADER IN CORDLESS INNOVATION**



**FASTEST GROWING 18V SYSTEM ON THE MARKET**  
50+ TOOLS

**M18**

**REDLITHIUM™ 2.0/XC4.0**

## FORCE LOGIC™ PRESS TOOL SYSTEM

Milwaukee® FORCE LOGIC™ Press Tools represent a new standard in pressing technology. Combining the revolutionary REDLITHIUM™ battery pack, proprietary REDLINK™ Intelligence, and a compact hydraulic mechanism, FORCE LOGIC™ Press Tools deliver on their promise: the smallest, most intelligent press tools.

### WHY PRESS?

Press is a method of joining pipe that uses force to make a connection, eliminating the need to solder, braze, thread, or weld. Utilizing only three short steps, connections can be completed up to 50% faster than traditional methods, and involve no open flame. Most importantly, press eliminates the need to drain and dry a system, enabling fast, professional repairs and increased productivity.

- Saves Time
- More Consistency
- Safe – No Open Flame

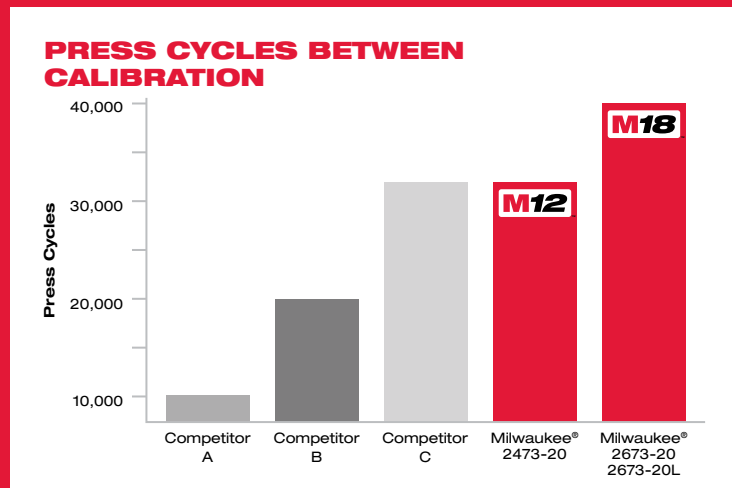
## WHAT ARE FORCE LOGIC™ PRESS TOOLS?

### COMPACT SIZE

The industry's smallest and lightest press tools offer a better-balanced, in-line design, that provides unrivaled access and ergonomics.

### RELIABILITY

A best-in-class calibration interval means up to 4X the connections between service.



## THE SMALLEST MOST INTELLIGENT PRESS TOOLS

### REDLINK™ INTELLIGENCE

Electronic Force Monitoring maintains even pressure throughout the press cycle, providing a green indicator light to ensure a good connection. REDLINK™ Intelligence communicates with the tool and battery to automatically shut off when not in use, preventing battery drain. A pre-press battery check ensures enough charge to complete each press.

## FORCE LOGIC™ MODELS

### M12



#### M12™ FORCE LOGIC™ Press Tool Kit

2473-22 (2473-20 No Jaw Kit)

**Includes:** 2473-22 (2) M12™ REDLITHIUM™ Compact Battery Packs, (3) Jaws 1/2" – 1", Charger, Carrying Case; 2473-20 Includes No Jaws

### M18



#### M18™ FORCE LOGIC™ Press Tool Kit

2673-22 (2673-20 No Jaw Kit)

**Includes:** 2673-22 (2) M18™ REDLITHIUM™ XC Extended Capacity Battery Packs, (6) Jaws 1/2" – 2", Multi-Voltage Charger, Carrying Case; 2673-20 Includes No Jaws

### M18



#### M18™ FORCE LOGIC™ Long Throw Press Tool Kit

2673-22L (2673-20L No Jaw Kit)

**Includes:** 2673-22L (2) M18™ REDLITHIUM™ XC Extended Capacity Battery Packs, (3) Jaws 1/2" – 1", Multi-Voltage Charger, Carrying Case; 2673-20L Includes No Jaws

### M12

#### Compact Jaws

Designed for use with all major fitting manufacturers.



For M12™ Compact Jaw part numbers, see page 15.

### M18

#### Standard Jaws and Rings

Jaws and Rings compatible with both 2673-20 and 2673-20L M18™ Press Tools



Designed for use with all major fitting manufacturers.

Designed for use with VIEGA®, APOLLO®, and GRINNELL® large diameter copper systems.

### M18

#### Stainless Steel Jaws and Rings

Jaws compatible with both 2673-20 and 2673-20L M18™ Press Tools; Rings compatible with 2673-20L only

Designed for use with GRINNELL® G-Press Stainless Steel Fittings



For M18™ Standard/Stainless Steel Jaw & Ring part numbers, see page 34.

APOLLO® is a registered trademark of Conbraco Industries, Inc. GRINNELL® is a registered trademark of Grinnell LLC VIEGA® is a registered trademark of Viega GmbH & Co.

**M28 THE LARGEST HIGH-VOLTAGE LITHIUM-ION CORDLESS SYSTEM**

When superior power and run-time is a necessity, the M28™ System will provide the performance of corded tools in a durable and reliable cordless package. M28™ is the largest high-voltage LITHIUM-ION system that will allow you to perform heavy duty applications without compromising durability or run-time.



**M28™ 1/2" Hammer Drill/Driver Kit**

0726-22 (0726-20 Tool-Only)

**Specifications:**

Peak Torque	750 in-lbs
RPM (High)	0 – 1,800
RPM (Low)	0 – 450
BPM	0 – 28,800
Chuck Type	1/2" Metal Single Sleeve

**Includes:** (2) M28™ LITHIUM-ION Battery Packs, 1-Hour Charger, Side-Handle, Carrying Case



**M28™ 1/2" High Torque Impact Wrench Kit**

0779-22 (0779-20 Tool-Only)

**Specifications:**

Torque	325 ft-lbs
RPM / IPM	0 – 1,450 / 0 – 2,450
Anvil	1/2" Pin Detent
Length	12-1/8"
Trigger	Variable

**Includes:** (2) M28™ LITHIUM-ION Battery Packs, 1-Hour Charger, Hanger Bracket w/ Steel Ring, Carrying Case



**M28™ 1/2" Right Angle Drill Kit**

0721-21 (0721-20 Tool-Only)

**Specifications:**

Chuck Type	1/2" Keyed
RPM	0 – 400 / 0 – 1,000
Torque	1,081 in-lbs
Tool Weight	10.9 lbs

**Includes:** (1) M28™ LITHIUM-ION Battery Pack, 1-Hour Charger, Chuck Key, Side Handle, Carrying Case



**M28™ 7/16" Hex Utility Impacting Drill**

0799-20 (Tool-Only)

**Specifications:**

Torque	325 ft-lbs
RPM / IPM	0 – 1,450 / 0 – 2,450
Anvil	7/16" Hex
Length	12-1/8"
Trigger	Variable

Battery and Charger Sold Separately

**Includes:** Hanger Bracket w/ Steel Ring



**M28™ 1" Compact SDS Plus Rotary Hammer Kit**

0756-22 (0756-20 Tool-Only)

**Specifications:**

BPM	0 – 4,700
RPM	0 – 1,400
Solid Bit Capacity	1"
Thin Wall Core Bit Capacity	2-1/2"
Tool Weight	9.5 lbs

**Includes:** (2) M28™ LITHIUM-ION Battery Packs, 1-Hour Charger, Depth Gauge, Side Handle, Carrying Case

Compatible with 2306-22 M12™ HAMMERVAC™ Universal Dust Extractor



**M28™ SAWZALL® Recip Saw Kit**

0719-22 (0719-20 Tool-Only)

**Specifications:**

SPM	0 – 2,000 / 0 – 3,000
Stroke Length	1-1/8"
Blade Clamp	QUIK-LOK®
Trigger	Variable
Weight	9.8 lbs

**Includes:** (2) M28™ LITHIUM-ION Battery Packs, 1-Hour Charger, (2) SAWZALL® Blades, Carrying Case



**M28™ 6-1/2" Circular Saw Kit**

0730-22 (0730-20 Tool-Only)

**Specifications:**

RPM	4,200
Blade Size	6-1/2"
Blade Guard	Magnesium
Shoe	Aircraft Aluminum
Weight	9.8 lbs

**Includes:** (2) M28™ LITHIUM-ION Battery Packs, 1-Hour Charger, Circular Saw Blade, Rip Fence, Wrench, Carrying Case



**M28™ Metal Cutting Saw Kit**

0740-22 (0740-20 Tool-Only)

**Specifications:**

RPM	3,200
Blade Size	6-7/8"
Shoe	Steel
Blade Guard	Magnesium
Weight	9.4 lbs

**Includes:** (2) M28™ LITHIUM-ION Battery Packs, 1-Hour Charger, (1) Circular Saw Blade, Wrench, Carrying Case



**M28™ Band Saw Kit**

0729-21 (0729-20 Tool-Only)

**Specifications:**

SFPM (Low)	0 – 225
SFPM (High)	0 – 350
Capacity	4-3/4" x 4-3/4"
LED Light	Yes

**Includes:** (1) M28™ LITHIUM-ION Battery Pack, 1-Hour Charger, Carrying Case



**M28™ 4-1/2" Cut-Off / Grinder Kit**

0725-21 (0725-20 Tool-Only)

**Specifications:**

RPM	8,000
Switch	Slide
Guard	Tool Free
Overload Protection	Yes
Weight	6.8 lbs

**Includes:** (1) M28™ LITHIUM-ION Battery Pack, 1-Hour Charger, Side Handle, (1) Spanner Wrench, (1) Type 1 Cut-Off Wheel & Guard, (1) Type 27 Grinding Wheel & Guard, Contractor Bag



**M28™ LED Work Light**

49-24-0187

**Specifications:**

Light	180 Lumen LED
Optics	Faceted Reflector
Head Rotation	135°
Hands Free	Integrated Hook

Battery and Charger Sold Separately



**M28™ Work Light**

49-24-0185

**Specifications:**

Bulb	High Intensity Xenon
Optics	Faceted Reflector
Head Rotation	135°
Hands Free	Integrated Hook

Battery and Charger Sold Separately

**Related Accessory:**

49-81-0090 – LED Upgrade

Compatible with Milwaukee® M12™, M18™, M28™ and most other power tool work lights



**M28™ REDLITHIUM™ Battery Pack**

48-11-2830

**Specifications:**

Battery Type	LITHIUM-ION
--------------	-------------



**M28™ LITHIUM-ION Battery Charger**

48-59-2819

**Specifications:**

Charge Time	1 Hour
-------------	--------



**M28™ 3-Tool Combo Kit**

0928-23

**Tools Included:**

1/2" Hammer Drill/Driver	0726-20
SAWZALL® Recip Saw	0719-20
Work Light	49-24-0185

**Includes:** (2) M28™ LITHIUM-ION Battery Packs, 1-Hour Charger, (2) General Purpose SAWZALL® Blades, Side Handle, Contractor Bag



**M28™ 4-Tool Combo Kit**

0928-29

**Tools Included:**

1/2" Hammer Drill/Driver	0726-20
SAWZALL® Recip Saw	0719-20
Circular Saw	0730-20
Work Light	49-24-0185

**Includes:** (2) M28™ LITHIUM-ION Battery Packs, 1-Hour Charger, (2) General Purpose SAWZALL® Blades, (1) Circular Saw Blade, Rip Fence, Side Handle, Contractor Bag



**M28™ Wet/Dry Vacuum**

0780-20

**Specifications:**

Material	Wet/Dry
Capacity	2 gal
Air Flow	45 cu. ft/min
Sealed Suction in Water	32"
Height	11-1/2"

Battery and Charger Sold Separately

**Includes:** Filter Assembly, Crevice Tool, Wide Utility Nozzle, Wireless Vinyl Hose



## M4 SYSTEM

### M4™ 1/4" Hex Screwdriver

2101-22, 2101-21 (2101-20 Tool-Only)

#### Specifications:

Peak Torque	44 in-lbs
RPM	0 – 200 / 0 – 600
Chuck Type	1/4" Hex Quick Change
Length	9-5/8"
Weight	1.0 lbs



**Includes:** 2101-22 (2) M4™ REDLITHIUM™ 2.0 Battery Packs, Charger, Carrying Case; 2101-21 Includes (1) M4™ REDLITHIUM™ 2.0 Battery Pack

### M4™ REDLITHIUM™ 2.0 Battery Pack

48-11-2001

#### Specifications:

Amp-Hour	2.0
Cell Chemistry	LITHIUM-ION
Charge Time	45 Minutes



### M4™ LITHIUM-ION Battery Charger

48-59-2001

#### Specifications:

Compatibility	All M4™ Batteries
Integrated Hang Holes	Yes
On-Board Indicator Light	Yes
Cell Voltage Monitoring	Yes



Battery and Charger Sold Separately

## REPLACEMENT BATTERIES

### 12 Volt NiCd Battery Pack

48-11-1970



#### Specifications:

Battery Type	NiCd
Warranty	1 Year

### 14.4 Volt NiCd Battery Pack

48-11-1024



#### Specifications:

Battery Type	NiCd
Warranty	1 Year

### 18 Volt NiCd Battery Pack

48-11-2230



#### Specifications:

Battery Type	NiCd
Warranty	1 Year

#### PORTABLE POWER TOOL (LIMITED WARRANTY):

Every MILWAUKEE power tool (including cordless product – tool, battery pack(s) - see separate & distinct CORDLESS BATTERY PACK LIMITED WARRANTY statements & battery charger and Work Lights\*) is warranted to the original purchaser only to be free from defects in material and workmanship. Subject to certain exceptions, MILWAUKEE will repair or replace any part on an electric power tool which, after examination, is determined by MILWAUKEE to be defective in material or workmanship for a period of five (5) years\* after the date of purchase unless otherwise noted. Return of the power tool to a MILWAUKEE factory Service Center location or MILWAUKEE Authorized Service Station, freight prepaid and insured, is required. A copy of the proof of purchase should be included with the return product. This warranty does not apply to damage that MILWAUKEE determines to be from repairs made or attempted by anyone other than MILWAUKEE authorized personnel, misuse, alterations, abuse, normal wear and tear, lack of maintenance, or accidents.

\*The warranty period for, **Job Site Radios, M12™ Power Port, M18™ Power Source, and Trade Titan™ Industrial Work Carts** is **one (1) year from the date of purchase**. The warranty period for a **LED Work Light** and **LED Upgrade Bulb** is a **limited LIFETIME warranty to the original purchaser only**, if during normal use the LED bulb fails the Work Light or Upgrade Bulb will be replaced free of charge.

\*This warranty does not cover Air Nailers & Stapler, Airless Paint Sprayer, Cordless Battery Packs, Gasoline Driven Portable Power Generators, Hand Tools, Hoist – Electric, Lever & Hand Chain, M12™ Heated Jackets, Reconditioned product and Test & Measurement products. There are separate and distinct warranties available for these products.

Warranty Registration is not necessary to obtain the applicable warranty on a MILWAUKEE power tool product. The manufacturing date of the product will be used to determine the warranty period if no proof of purchase is provided at the time warranty service is requested.

ACCEPTANCE OF THE EXCLUSIVE REPAIR AND REPLACEMENT REMEDIES DESCRIBED HEREIN IS A CONDITION OF THE CONTRACT FOR THE PURCHASE OF EVERY MILWAUKEE PRODUCT. IF YOU DO NOT AGREE TO THIS CONDITION, YOU SHOULD NOT PURCHASE THE PRODUCT. IN NO EVENT SHALL MILWAUKEE BE LIABLE FOR ANY INCIDENTAL, SPECIAL, CONSEQUENTIAL OR PUNITIVE DAMAGES, OR FOR ANY COSTS,

ATTORNEY FEES, EXPENSES, LOSSES OR DELAYS ALLEGED TO BE AS A CONSEQUENCE OF ANY DAMAGE TO, FAILURE OF, OR DEFECT IN ANY PRODUCT INCLUDING, BUT NOT LIMITED TO, ANY CLAIMS FOR LOSS OF PROFITS. SOME STATES DO NOT ALLOW THE EXCLUSION OR LIMITATION OF INCIDENTAL OR CONSEQUENTIAL DAMAGES, SO THE ABOVE LIMITATION OR EXCLUSION MAY NOT APPLY TO YOU. THIS WARRANTY IS EXCLUSIVE AND IN LIEU OF ALL OTHER EXPRESS WARRANTIES, WRITTEN OR ORAL. TO THE EXTENT PERMITTED BY LAW, MILWAUKEE DISCLAIMS ANY IMPLIED WARRANTIES, INCLUDING WITHOUT LIMITATION ANY IMPLIED WARRANTY OF MERCHANTABILITY OR FITNESS FOR A PARTICULAR USE OR PURPOSE; TO THE EXTENT SUCH DISCLAIMER IS NOT PERMITTED BY LAW, SUCH IMPLIED WARRANTIES ARE LIMITED TO THE DURATION OF THE APPLICABLE EXPRESS WARRANTY AS DESCRIBED ABOVE. SOME STATES DO NOT ALLOW LIMITATIONS ON HOW LONG AN IMPLIED WARRANTY LASTS, SO THE ABOVE LIMITATION MAY NOT APPLY TO YOU, THIS WARRANTY GIVES YOU SPECIFIC LEGAL RIGHTS, AND YOU MAY ALSO HAVE OTHER RIGHTS WHICH VARY FROM STATE TO STATE.

This warranty applies to product sold in the U.S.A. and Canada only.

Please consult the **'Service Center Search'** in the **Parts & Service** section of MILWAUKEE's website [www.milwaukeetool.com](http://www.milwaukeetool.com) or call 1.800.SAWDUST (1.800.729.3878) to locate your nearest service facility for warranty and non-warranty service on a Milwaukee **electric power tool**.

#### CORDLESS BATTERY PACK (LIMITED WARRANTY):

Every MILWAUKEE Battery Pack (sold with cordless product and/or as a replacement battery pack) is warranted to the **original purchaser only** to be free from defects in material and workmanship. Subject to certain exceptions, MILWAUKEE will repair or replace a battery pack which, after examination, is determined by MILWAUKEE to be defective in material or workmanship for the **stated warranty period** from date of purchase. Return of the battery pack to a MILWAUKEE factory Service Center location or MILWAUKEE Authorized Service Station, freight prepaid and insured, is required. A copy of the proof of purchase should be included with the return product. This warranty does not apply to damage that MILWAUKEE determines to be from repairs made or attempted by anyone other than MILWAUKEE authorized personnel, misuse, alterations, abuse, normal wear and tear, lack of maintenance, or accidents.

Battery Pack Description	Chemistry	Warranty Period (from date of purchase)
M12™ XC REDLITHIUM™, M12™ REDLITHIUM™ XC 4.0, M18™ XC REDLITHIUM™, M18™ REDLITHIUM™ XC 4.0, M28™ XC LITHIUM-ION, M28™ XC REDLITHIUM™	LITHIUM-ION	Three (3) Years
M4™ REDLITHIUM™ 2.0, V4 LITHIUM-ION, M12™ Compact LITHIUM-ION, M12™ Compact REDLITHIUM™, M12™ XC LITHIUM-ION, M12™ REDLITHIUM™ 2.0, M18™ Compact LITHIUM-ION, M18™ Compact REDLITHIUM™, M18™ REDLITHIUM™ 2.0	LITHIUM-ION	Two (2) Years
M18™ XC LITHIUM-ION, V18™ V™-technology LITHIUM-ION Serial number prefix "A95", V28™ V™-technology LITHIUM-ION	LITHIUM-ION	Two (2) Years – plus, Three (3) Years Pro-Rata (prorated)*
Ni-Cd, Ni-Cd Super-Tough, Ni-Cd Power-Plus, Ni-MH	Ni-Cd / Nickel-Cadmium, Ni-MH / Nickel-Metal-Hydride	One (1) Year
V18™ V™-technology LITHIUM-ION Serial number prefix "E95"	LITHIUM-ION	

The warranty period for all **Ni-CD** and Ni-MH **Battery Packs** is **one (1) year** from the date of purchase. The warranty period for V4 Lithium-Ion, M12™ Compact Lithium-ion, M12™ Compact **REDLITHIUM™**, M12™ XC LITHIUM-ION, M18™ Compact LITHIUM-ION and M18™ Compact **REDLITHIUM™ Battery Packs** is **two (2) years** from the date of purchase. The warranty period for **M12™ XC REDLITHIUM™, M18™ XC REDLITHIUM™, M28™ XC REDLITHIUM™** and **M28™ XC LITHIUM-ION Battery Packs** is **three (3) years** from the date of purchase. \*The warranty period for every MILWAUKEE **V™-technology V28™ LITHIUM-ION Battery Pack, M18™ Extended CAPACITY LITHIUM-ION Battery Pack, and V™-technology V18™ LITHIUM-ION Battery Pack (with the serial number prefix "A95")** is **five (5) years / 2000 charges** from the date of purchase, whichever first occurs. The first 1000 charges or 2 years of the warranty, whichever first occurs, are covered through free replacement of the defective battery. This means that for the earlier of the first 1000 charges or two (2) years from the date of purchase/ first charge, a replacement battery will be provided to the customer for any defective battery free of charge. Thereafter, the remaining charges up to a total of 2000 or the remainder of the five (5) year period from the date of purchase, whichever first occurs, will be covered on a pro rata basis. This means that every customer gets an additional 1000 charges or three (3) years of pro rata warranty on the **V™ technology V28™ LITHIUM-ION Battery Pack, M18™ XC LITHIUM-ION Battery Pack, and V™-technology V18™ LITHIUM-ION Battery Pack (with the serial number prefix "A95")** depending upon the amount of use. The warranty period for **V™-technology V18™ LITHIUM-ION Battery Pack (with the serial number prefix "E95")** is **one (1) year**.

Warranty Registration is not necessary to obtain the applicable warranty on a MILWAUKEE battery pack. The manufacturing date of the product will be used to determine the warranty period if no proof of purchase is provided at the time warranty service is requested.

ACCEPTANCE OF THE EXCLUSIVE REPAIR AND REPLACEMENT REMEDIES DESCRIBED HEREIN IS A CONDITION OF THE CONTRACT FOR THE PURCHASE OF EVERY MILWAUKEE PRODUCT. IF YOU DO NOT AGREE TO THIS CONDITION, YOU SHOULD NOT PURCHASE THE PRODUCT. IN NO EVENT SHALL MILWAUKEE BE LIABLE FOR ANY INCIDENTAL, SPECIAL, CONSEQUENTIAL OR PUNITIVE DAMAGES, OR FOR ANY COSTS,

ATTORNEY FEES, EXPENSES, LOSSES OR DELAYS ALLEGED TO BE AS A CONSEQUENCE OF ANY DAMAGE TO, FAILURE OF, OR DEFECT IN ANY PRODUCT INCLUDING, BUT NOT LIMITED TO, ANY CLAIMS FOR LOSS OF PROFITS. SOME STATES DO NOT ALLOW THE EXCLUSION OR LIMITATION OF INCIDENTAL OR CONSEQUENTIAL DAMAGES, SO THE ABOVE LIMITATION OR EXCLUSION MAY NOT APPLY TO YOU. THIS WARRANTY IS EXCLUSIVE AND IN LIEU OF ALL OTHER EXPRESS WARRANTIES, WRITTEN OR ORAL. TO THE EXTENT PERMITTED BY LAW, MILWAUKEE DISCLAIMS ANY IMPLIED WARRANTIES, INCLUDING WITHOUT LIMITATION ANY IMPLIED WARRANTY OF MERCHANTABILITY OR FITNESS FOR A PARTICULAR USE OR PURPOSE; TO THE EXTENT SUCH DISCLAIMER IS NOT PERMITTED BY LAW, SUCH IMPLIED WARRANTIES ARE LIMITED TO THE DURATION OF THE APPLICABLE EXPRESS WARRANTY AS DESCRIBED ABOVE. SOME STATES DO NOT ALLOW LIMITATIONS ON HOW LONG AN IMPLIED WARRANTY LASTS, SO THE ABOVE LIMITATION MAY NOT APPLY TO YOU, THIS WARRANTY GIVES YOU SPECIFIC LEGAL RIGHTS, AND YOU MAY ALSO HAVE OTHER RIGHTS WHICH VARY FROM STATE TO STATE.

This warranty applies to product sold in the U.S.A. and Canada only.

Please consult the **'Service Center Search'** in the **Parts & Service** section of MILWAUKEE's website [www.milwaukeetool.com](http://www.milwaukeetool.com) or call 1.800.SAWDUST (1.800.729.3878) to locate your nearest service facility for warranty and non-warranty service on a Milwaukee **Cordless Battery Pack**.

#### M12 HEATED JACKET (LIMITED WARRANTY):

Every MILWAUKEE **M12 HEATED JACKET** (including its battery holder) is warranted to the **original purchaser only** to be free from defects in material and workmanship. Subject to certain exceptions, MILWAUKEE will repair or replace any part on M12™ Heated Jacket which, after examination, is determined by MILWAUKEE to be defective in material or workmanship for a period of one (1) year\* after the date of purchase. Return of the Heated Jacket to a MILWAUKEE **factory** Service Center location, freight prepaid and insured, is required. A copy of the proof of purchase should be included with the return product. This warranty does not apply to damage that MILWAUKEE determines to be from repairs made or attempted by anyone other than MILWAUKEE personnel, misuse, alterations, abuse, normal wear and tear, or accidents.

\*This warranty does not cover a M12™ LITHIUM-ION Battery Pack; **there is a separate and distinct warranty** available for a battery pack.

Warranty Registration is not necessary to obtain the applicable warranty on a MILWAUKEE heated jacket. The manufacturing date of the product will be used to determine the warranty period if no proof of purchase is provided at the time warranty service is requested.

ACCEPTANCE OF THE EXCLUSIVE REPAIR AND REPLACEMENT REMEDIES DESCRIBED HEREIN IS A CONDITION OF THE CONTRACT FOR THE PURCHASE OF EVERY MILWAUKEE PRODUCT. IF YOU DO NOT AGREE TO THIS CONDITION, YOU SHOULD NOT PURCHASE THE PRODUCT. IN NO EVENT SHALL MILWAUKEE BE LIABLE FOR ANY INCIDENTAL, SPECIAL, CONSEQUENTIAL OR PUNITIVE DAMAGES, OR FOR ANY COSTS, ATTORNEY FEES, EXPENSES, LOSSES OR DELAYS ALLEGED TO BE AS A CONSEQUENCE OF ANY DAMAGE TO, FAILURE OF, OR DEFECT IN ANY PRODUCT INCLUDING, BUT NOT LIMITED TO, ANY CLAIMS FOR LOSS OF PROFITS. SOME STATES DO NOT ALLOW THE EXCLUSION OR LIMITATION OF INCIDENTAL OR CONSEQUENTIAL DAMAGES, SO THE ABOVE LIMITATION OR EXCLUSION MAY NOT APPLY TO YOU. THIS WARRANTY IS EXCLUSIVE AND IN LIEU OF ALL OTHER EXPRESS WARRANTIES, WRITTEN OR ORAL. TO THE EXTENT PERMITTED BY LAW, MILWAUKEE DISCLAIMS ANY IMPLIED WARRANTIES, INCLUDING WITHOUT LIMITATION ANY IMPLIED WARRANTY OF MERCHANTABILITY OR FITNESS FOR A PARTICULAR USE OR PURPOSE; TO THE EXTENT SUCH DISCLAIMER IS NOT PERMITTED BY LAW, SUCH IMPLIED WARRANTIES ARE LIMITED TO THE DURATION OF THE APPLICABLE EXPRESS WARRANTY AS DESCRIBED ABOVE. SOME STATES DO NOT ALLOW LIMITATIONS ON HOW LONG AN IMPLIED WARRANTY LASTS, SO THE ABOVE LIMITATION MAY NOT APPLY TO YOU, THIS WARRANTY GIVES YOU SPECIFIC LEGAL RIGHTS, AND YOU MAY ALSO HAVE OTHER RIGHTS WHICH VARY FROM STATE TO STATE.

This warranty applies to product sold in the U.S.A. and Canada only.

Please consult the **'Service Center Search'** in the **Parts & Service** section of MILWAUKEE's website [www.milwaukeetool.com](http://www.milwaukeetool.com) or call 1.800.SAWDUST (1.800.729.3878) to locate your nearest MILWAUKEE **factory** Service Center location.

## FACTORY SERVICE CENTERS 1-800-SAWDUST (1-800-729-3878)

### Atlanta

6155 Jimmy Carter Blvd,  
Suite F2  
Norcross, GA 30071

### Boston

375 University Avenue  
Westwood, MA 02090

### Chicago

6310 Gross Point Road  
Niles, IL 60714

### Cleveland

8200 Sweet Valley Drive  
Valley View, OH 44125

### Dallas

2701 W Airport Freeway,  
Unit 110  
Irving, TX 75062

### Denver

2500 W 8th Avenue, Unit E  
Denver, CO 80204

### Houston

3566 West T.C. Jester Blvd  
Houston, TX 77018

### Las Vegas

5580 S Decatur Blvd,  
Unit 110  
Las Vegas, NV 89118

### Miami

3311 NW 82nd Avenue  
Miami, FL 33122

### Minneapolis/St. Paul

9705 Valley View Road  
Eden Prairie, MN 55344

### Milwaukee

13145 W Lisbon Road  
Brookfield, WI 53005

### New York City

3068 Whitestone Expressway  
Flushing, NY 11354

### Philadelphia

821 W Sproul Road  
Springfield, PA 19064

### San Antonio

14329 San Pedro Avenue, Suite D  
San Antonio, TX 78232

### San Diego

8252 Clairmont Mesa Blvd, Unit D  
San Diego, CA 92111

### San Francisco/Oakland

41601 Albreca Street  
Fremont, CA 94538

### Seattle

18939 120th Avenue NE,  
Suite 111  
Bothell, WA 98011

### Washington D.C.

11712 Baltimore Avenue  
Beltsville, MD 20705

## CANADA

### Edmonton

18129 111 Avenue NW  
Edmonton, AB T5S 2P2

### Toronto

140 Fernstaff Court, Unit 4  
Vaughan, ON L4K 3L8

## NEED TO HAVE YOUR MILWAUKEE® PRODUCT REPAIRED?

### USE e-SERVICE

#### BENEFITS OF USING e-SERVICE

- FREE FedEx® GROUND Shipping to Milwaukee®'s Central Repair Facility
- 1,800+ convenient drop-off FedEx® Office (formerly FedEx® Kinkos) locations – some locations available 24/7
- All work is done by factory trained technicians
- Only genuine Milwaukee® parts used – NO GENERIC PARTS
- Repair of your tool in 5 working days or less (shipping times excluded)
- Your tool is returned directly to you – no need to come back to pick it up (saving time) – a return freight charge will apply

Fill out the form found at [www.milwaukeetool.com/e-service](http://www.milwaukeetool.com/e-service)

## SYSTEMS

M12™ System .....	7
M18™ System .....	23
M28™ System .....	41
M4™ System .....	43

## DRILLING & DRIVING

M12™ Screwdrivers .....	11
M12™ Drill/Drivers .....	11
M12™ Hammer Drill/Drivers .....	11
M12™ Right Angle Drill .....	11
M18™ Drill/Drivers .....	27
M18™ Hammer Drill/Drivers .....	27
M18™ Right Angle Drills .....	28
M28™ Hammer Drill/Driver .....	41
M28™ Right Angle Drill .....	41
M4™ Screwdriver .....	43

## CONCRETE

M12™ Rotary Hammer .....	13
M12™ HAMMERVAC™ Universal Dust Extractor .....	13
M18™ Rotary Hammer .....	28
M28™ Rotary Hammer .....	41

## IMPACTS & FASTENING

M12™ Impact Drivers .....	12
M12™ Impact Wrenches .....	12
M12™ Ratchets .....	12
M18™ Impact Drivers .....	28
M18™ Impact Wrenches .....	29
M18™ High Torque Impact Wrenches .....	30
M28™ High Torque Impact Wrenches .....	41

## SAWING & CUTTING

M12™ Rotary Tool .....	13
M12™ HACKZALL® Recip Saw .....	14
M12™ Jig Saw .....	14
M12™ Multi-Tool .....	14
M18™ SAWZALL® / HACKZALL® Recip Saws .....	32
M18™ Jig Saw .....	32
M18™ Circular Saw .....	32
M18™ Multi-Tool .....	33
M28™ SAWZALL® Recip Saw .....	41
M28™ Circular Saw .....	41

## METAL WORKING

M12™ Band Saw .....	14
M18™ Metal Cutting Saw .....	33
M18™ Band Saw .....	33
M18™ Cut-Off / Grinder .....	33
M28™ Metal Cutting Saw .....	42
M28™ Band Saw .....	42
M28™ Cut-Off / Grinder .....	42

## PLUMBING & ELECTRICAL

M12™ 600 MCM Cable Cutter .....	14
M12™ Copper Tubing Cutter .....	15
M12™ PVC Shear .....	15
M12™ ProPEX® Expansion Tool / Accessories .....	15
M12™ FORCE LOGIC™ Press Tool / Accessories .....	15
M12™ No-Hub Driver .....	15
M18™ FORCE LOGIC™ Press Tools / Accessories .....	34
M18™ FORCE LOGIC™ Knockout Tools / Accessories .....	34
M18™ ProPEX® Expansion Tool / Accessories .....	35

## APPLICATORS

M12™ Caulk Guns / Accessories .....	16
M12™ Grease Gun .....	16
M18™ Caulk Guns / Accessories .....	31
M18™ Grease Gun .....	31

## TEST & MEASUREMENT

M12™ M-SPECTOR 360™ / Accessories .....	17
M12™ M-SPECTOR™ AV / Accessories .....	17
M12™ 160 x 120 Thermal Imager .....	17
M12™ Laser Thermometers .....	18
M12™ SUB-SCANNER™ .....	18

## SPECIALTY PRODUCTS

M12™ Palm Nailer .....	13
M12™ Tool Holster .....	18
M12™ Work Lights .....	18
M12™ 2-Beam Plumb Laser .....	18
M12™ Jobsite Radio .....	19
M12™ Power Source .....	19
M12™ Heated Gear / Accessories .....	20
M18™ Work Lights .....	35
M18™ Wet/Dry Vacuum .....	35
M18™ Jobsite Radio .....	35
M18™ Power Source .....	36
M28™ Work Lights .....	42
M28™ Wet/Dry Vacuum .....	42

## BATTERIES & CHARGERS

M12™ Batteries & Chargers .....	19
M18™ Batteries & Chargers .....	36
M28™ Battery & Charger .....	42
M4™ Battery & Charger .....	43

## COMBO KITS

M12™ Combo Kits .....	21
M18™ Combo Kits .....	37
M28™ Combo Kits .....	42





**FALL 2013 CORDLESS CATALOG**

**M12**  
SYSTEM

**M18**  
SYSTEM

**M28**  
SYSTEM